

From the President's Desk

Thomas J. Gould, Ph.D.,

Dear Society for
Psychopharmacology and
Substance Use, Division 28-

This letter I write is very special to me as it is my first as your President. Over the last year as President-Elect, I was fortunate enough to be able to work with Ryan Vandrey while he served as President and Kelly Dunn while she served as Past-President. I was inspired by their leadership and passion for Division 28. They, along with the Executive Committee, continue to demonstrate an outstanding commitment to Division 28. Thus, as I assumed the Presidency, I knew our Division had an outstanding foundation and an extremely bright future.



Following in the 5-year plan developed during Kelly Dunn's Presidency, we will continue to work to build a diverse and inclusive membership, facilitate member engagement, develop our outward facing presence through social media and our webpage, recognize member accomplishments, and mentor and train the next generation of leaders in psychopharmacology.

Although the year is still young, there have already been several new developments. **We have officially become the Society for Psychopharmacology and Substance Use!** This change from "Abuse" to "Use" will be reflected in a new Division logo that we are working to develop and on all Division materials now that it has been approved. We are also launching a new webpage. These are initiatives started by Kelly Dunn and Ryan Vandrey, and I am thrilled to see them completed. Both will increase our presence and our ability to best represent our membership. In addition, Jessica Weafer, our Program Chair, has been doing an amazing job putting together a strong program for the 2023 APA Conference in Washington, DC August 3rd to the 5th. We already have a full slate of excellent science that should be of high interest to not only all of Division 28 but also to APA in general – Thank you Jessica! I am looking forward to seeing you at APA 2023. In the meantime, please feel free to reach out to me to share thoughts, ideas, and inspirational stories.

Best wishes, **Tom**

Table of Contents

From the President’s Desk.....	1
Table of Contents	2
Early Career Psychologist column: Navigating the Early Career Grant Landscape	3
2023 APA Convention Update	4
Invited Column: Issues of Diversity, Equity, and Inclusion	5
2023 Division 28 Award Winners	6
Brady-Schuster Award	6
Early Career Psychopharmacologist Award	7
Outstanding Dissertation Award	7
Welcome to our New Division 28 Members!	8
A Very Special Thank You to our Corporate Affiliates	9
For more on Ashley, please visit their website: https://www.ashleytreatment.org/	9
Upcoming Events	10
<i>Psychopharmacology and Substance Use News</i> Editorial Policy.....	10
Division 28 Membership Information	10
<i>Experimental and Clinical Psychopharmacology</i>	11
Training and Career Announcements	16
Division 28 Executive Committee.....	20



Early Career Psychologist column: Navigating the Early Career Grant Landscape

By Justin Strickland, Ph.D.

Postdoctoral and early career positions are filled with a number of new responsibilities and roles. Chief among these is the procurement of intramural and extramural funds typically through competitive grant awards. These awards can serve a number of functions including facilitating the conduct of research projects, supporting staff or trainees, and generating protected research time from clinical duties or through teaching buyouts. While grant writing can (and ideally should) be an exciting new part of your work, it can also be a daunting one. Below I discuss five tips for making the most of your first grant writing experiences. This advice largely focuses on NIH applications, but is broadly applicable to other funding opportunities and agencies (e.g., NSF, SAMHSA).

1. Don't Procrastinate

Grant writing begins long before the day a grant is due. It is a good idea to get started with the grant process at least 4-6 months prior to the grant due date. This early period can be devoted to developing your research idea and writing a Specific Aims page, which will inevitably change a double digit number of times prior to you even starting to think about writing other sections. Getting started early is important given that a number of steps in the process such as internal routing of information and development of subawards can be lengthy. Starting early ensures that you have as much wiggle room as possible to reduce stress you may experience as those due dates get closer.

2. Seek the Help of Others

Mentors, colleagues, and other friends can provide an invaluable source of support in developing your own proposals. At the most practical level, these people can provide examples of successful (and unsuccessful) grants, which can offer tips for particularly effective writing styles as well as guides for how to tackle specific sections of grants. Others can also help review drafts providing feedback that will be important to address -- because if you or a colleague sees a potential problem, a reviewer certainly will.

3. Identify Unique Mechanisms for Early Career Investigators

A number of special mechanisms are dedicated to funding early career investigators. For example, NIH provides a number of early career training grants and mentored research awards that can function as a good scaffolding to larger R research grants (<https://researchtraining.nih.gov/career/early-career>). Other opportunities benefit early career researchers such as the ESI (Early Stage Investigator) designation for R01 applications or ESI-specific awards (such as the Stephen I. Katz Early Stage Investigator Research Project Grant). It is important to leverage these sources of support at this stage in your career given that they are specifically designed to help ensure the funding of investigators like you.

4. Seek Out Opportunities to Participate in Grant Review

One of the best ways to improve your own grants is to see how they are reviewed. Serving on grant review panels is not only a good service to the field, but also an opportunity to see strengthen your own approach. NIH has explicit opportunities for early career researchers to serve on grant panels through its Early Career Reviewer (ECR) Program (<https://public.csr.nih.gov/ForReviewers/BecomeAReviewer/ECR>). You may also find opportunities to serve on grant panels through your local institute and even APA!

5. Don't Be Discouraged

Finally, while the grant process is slow and can be frustrating at times, it is important to avoid becoming discouraged. Grant writing while akin to other writing you may have done in your academic career is a new skillset. It can take time to adjust to the new way of thinking about your science. Continuing to put your best science foot forward will certainly lead to success

2023 APA Convention Update

Jessica Weafer, Ph.D.

Please join us for the annual APA convention!

The convention will take place in Washington, D.C. from August 3rd to 5th, 2023.

I'd like to thank all of the Division 28 members for submitting and reviewing our program submissions. We would not be able to develop such high-quality programming each year without the hard work of our reviewers.

This year's Division 28 program features some truly excellent, thought-provoking science spanning the wide range of timely topics and innovative questions currently being investigated by substance use and psychopharmacology researchers. The program will include divisional and co-sponsored symposia, posters, and skill-building sessions.



This year's divisional symposia include:

- [An Interdisciplinary Overview on the Increasing Clinical and Scientific Relevance of Kratom](#)
- [Behavioral Pharmacology of Non-THC Cannabis Constituents: Effects of Minor Cannabinoids and Terpenes](#)
- [How Does Stress Influence Substance Use Severity and Treatment Outcomes?](#)
- [Sleep as a Treatment Target for Substance Use Disorders](#)
- [Innovative Interventions for Adults with Opioid Use Disorder](#)
- [Approaching Significance: How to Navigate the Wild World of Statistics](#)
- [Novel Brain, Behavior, and Methodological Approaches to Understanding Substance Use Recovery across the Lifespan](#)

We are also holding our in-person and virtual poster sessions as well as several award presentations to highlight the outstanding researchers who are making valuable contributions to our field. This includes the NIDA/NIAAA early career poster session and social hour (co-sponsored by Division 28 and Division 50), which is an excellent networking opportunity for young researchers (and it's catered!).

In addition, current Division 28 President Tom Gould will give his Presidential Address on what a historical and psychopharmacology perspective of nicotine can tell us about addiction.

The dates/times of each session will be posted soon. However, please start thinking about your travel arrangements now.

I am excited to see everyone in D.C!

Invited Column: Issues of Diversity, Equity, and Inclusion

Nora D. Volkow, Ph.D.,

Director National Institute on Drug Abuse

A few years ago, I visited a methadone clinic in Baltimore and sat with several of the patients discussing the challenges they faced sticking with their treatment for opioid addiction. Every one of the individuals around the table told me the same thing: The biggest challenge was not having a place to sleep. Without housing, so much of their time was consumed arriving early enough to a shelter so that they could get a room, or other logistical challenges related to their basic life necessities—obtaining meals was another challenge—that they frequently could not make it to the methadone clinic on a given day.

Talking to these patients demonstrated to me that treatment isn't just about the delivery of a medication or some other intervention that works in ideal laboratory conditions. It is also about the social and economic factors that shape people's real lives, day to day. Across many institutes of the NIH, research is increasingly focusing on social determinants of health: factors like work and housing instability, food insecurity, lack of transportation, racism, class discrimination, immigration status, and stigma and their integral role in shaping risks and treatment outcomes for many health conditions. These factors are major drivers of the "deaths of despair" shortening Americans' life expectancy, including overdose, suicide, and liver disease from alcohol use. Understanding and finding ways to intervene in social determinants of health are now central priorities for the National Institute on Drug Abuse.

The NIDA-and NIAAA-led nationwide longitudinal [Adolescent Brain Cognitive Development study](#) is already yielding striking new science on some of the neurodevelopmental mechanisms by which various forms of social adversity influence many aspects of mental health. Mitigating the adverse effects of environmental risk factors like social-economic disadvantage has long been a target of NIDA-funded substance use prevention research, and with projects like the [HEALing Communities study](#), we are now bringing a similar mindset to addiction care and recovery. For instance, data is being gathered on how providing transportation to patients receiving medication for opioid use disorder increases retention in treatment.

Measuring social determinants of health can help researchers better design treatment interventions and services, as well as make addiction care more equitable. Research in other areas of medicine has already revealed the distorting effects of failure to take that step. For instance, a [2019 reanalysis](#) of the data from a huge international clinical trial of hypertension medications found significant disparities in blood-pressure control, all-cause mortality, and various heart-related outcomes depending on whether participants had received their care in low-income versus high-income neighborhoods—differences not accounted for by the medications participants received or by their clinical characteristics, and ignored in the original analysis.

In clinical trials of new medications to treat addiction, it is crucial that we take into account social determinants that influence participants' access to quality healthcare. Besides enhancing clinical science, measuring such factors could also help personalize our approach to addiction treatment, for instance by helping determine which patients in opioid addiction treatment might benefit from counseling or other services in addition to medications. No aspect of health exists in a bubble, and this is especially true of substance use and addiction. Researchers keep in mind the diversity of people affected and how their different social contexts and circumstances affect their prospects, especially when those factors can be modified to make treatment more successful and recovery more likely.



2023 Division 28 Award Winners

Richard Yi, Ph.D.

Please join me in congratulating our 2023 Division 28 Award Winners! We had excellent candidates nominated in all categories, and I would like to thank all the nominees and those who nominated them for their participation this year. Division 28 has an outstanding roster of early career and senior scientists doing excellent work. Now, for our winners!

Brady-Schuster Award

Adam M. Leventhal, Ph.D.

Professor

University of Southern California,
Health, Emotion, & Addiction Laboratory
(USCHEAL)

This award honors a mid-career or senior scientist (at least 15 years after doctoral degree) who conducts outstanding research underscoring the fundamental importance of behavioral science to psychopharmacology or substance use.

This year's winner is **Dr. Adam M. Leventhal**.

Dr. Adam Leventhal, Ph.D. serves as Professor of Preventive Medicine and Psychology at the University of Southern California Keck School of Medicine and USC Norris Comprehensive Cancer Center, is an addiction psychologist and public health scientist. Dr. Leventhal is the Founding Director of the USC Health, Emotion, & Addiction Laboratory (USC-HEAL; <https://heal.usc.edu/>), a group of six faculty investigators and 30 staff and trainees who study the causes, consequences, treatment, and prevention of addiction and mental illness across the lifespan. Having been awarded more than \$40 million in grant funding from the NIH and other agencies, USC-HEAL's current areas of focus are: 1) adolescent and young adult use of tobacco, cannabis, and opioids; 2) the co-occurrence of addiction and mental illness; 3) the development of new medications to promote smoking cessation; 4) science to inform public policies for regulating tobacco and other consumer products; and 5) cancer and cardiovascular disease prevention.

Dr. Leventhal is also the Founding Director of the USC Institute for Addiction Science (USC-IAS), a university-wide initiative that supports transdisciplinary science and education for a network of 40+ faculty addiction experts across 5 schools and colleges at USC.

Dr. Leventhal has authored nearly 300 peer-reviewed scientific articles, including publications in *JAMA*, *JAMA Pediatrics*, *Addiction*, *New England Journal of Medicine*, among many others. His work has been covered by the Associated Press, NBC Nightly News, and New York Times. Dr. Leventhal is active in policy arenas, having served on expert panels on the health effects of e-cigarettes and tobacco products for the National Academy of Sciences, Engineering, and Medicine and the US Surgeon General. He is an elected fellow of the American Academy of Health Behavior and American Psychological Association and recipient of awards for early and mid-career contributions to science and mentoring. His personal interests include running, playing guitar, watching football, and spending time with friends and family.



Early Career Psychopharmacologist Award

Tory R. Spindle, Ph.D.

Assistant Professor, Johns Hopkins University, Behavioral Pharmacology Research Unit



This award honors an early career scientist conducting original, meritorious work in psychopharmacology and encourages excellence in research at the interface between the disciplines of pharmacology and psychology.

This year's winner is **Dr. Tory R. Spindle**. Dr. Tory Spindle obtained his PhD in Experimental Health Psychology from Virginia Commonwealth University. Broadly, Dr. Spindle utilizes human laboratory studies to characterize the behavioral pharmacology of cannabis and nicotine/tobacco products. His cannabis research seeks to understand how factors such as route of administration (oral, vaped, smoked, topical), dose, product formulation/chemical composition profile, and user factors (e.g., puffing topography, sex, tolerance) impacts the pharmacokinetic and pharmacodynamic effects of cannabis. Another emphasis of his work is on characterizing cognitive, psychomotor, and driving impairment associated with cannabis, when used alone and in combination with alcohol. Overall, Dr. Spindle's cannabis work

is intended to inform policy decisions involving cannabis such as product standards and accessibility, dosing guidelines, and procedures for detecting cannabis impairment. His nicotine/tobacco research seeks to characterize the pharmacokinetic and pharmacodynamic effects of novel products such as oral nicotine pouches and electronic cigarettes in order to inform FDA regulation of these products. Dr. Spindle's overarching goals include utilizing his research to inform public policies and regulatory actions for cannabis and nicotine/tobacco products.

Outstanding Dissertation Award

Austin Zamarripa, Ph.D.

Postdoctoral Fellow, Johns Hopkins University
Behavioral Pharmacology Research Unit

This award honors the best doctoral dissertations in psychopharmacology and substance use research.

This year's winner is **Austin Zamarripa, Ph.D.** Dr. Zamarripa obtained his PhD in Neuroscience from The University of Mississippi Medical Center. He is currently a postdoctoral fellow at Johns Hopkins University, Behavioral Pharmacology Research Unit (BPRU). Dr. Zamarripa's work has focused on drug-drug interactions using methods in behavioral pharmacology to assess the effects of cannabis and other substances. His research goal is to establish an independent research program that utilizes a drug interaction framework to investigate the effects of cannabis. With his clinical laboratory studies, he has examined how cannabis product formulations (e.g., novel edible products), routes of administration (e.g., smoked, vaporized, and orally ingested), dose, and



user factors affect the pharmacokinetic and pharmacodynamics of cannabis alone or in combination with commonly used medications and other substances, such as alcohol. Additionally, Dr. Zamarripa's work has focused on drugged driving, primarily using driving simulations to characterize the cognitive, psychomotor, and impairment associated with cannabis and other impairing substances. His overarching goal is to inform policy decisions involving cannabis, including product standards and accessibility, dosing guidelines, and procedures for detecting cannabis intoxication. Dr. Zamarripa will continue his work at Johns Hopkins University (BPRU) where he plans to stay on after his postdoctoral fellowship concludes.

Welcome to our New Division 28 Members!

We are very excited to welcome several new members! We are excited to get to know our new members. If you are a new member and would like to be introduced in the newsletter, please contact Justin Yates (yatesj1@nku.edu).



My name is **Kimberly Weber-Clark**, and I am honored to be one of the newest members of Division 28 of the APA. I am currently a doctoral student at Keiser University, focusing on childhood behavioral disorders, adult trauma and PTSD, and adolescent and adult substance use and abuse. These topics rank highly in my concentration areas for future research. I additionally have an avid interest in researching and better understanding the biological pathways to substance use, addiction, and potential predictive qualities to such, as well as interventions that can reduce both relapse and recidivism. My passion lies in creating a better future for individuals that is free of judgement and stigma and conducive to enhancing quality of life and well-being.

Justin Verlinden received his BA in Biology and Neuroscience (with a minor in Creative Writing) at Augustana College and recently received his MS in Experimental Psychology at the University of Kentucky. Justin is a current graduate student working towards his PhD in Experimental Psychology at the University of Kentucky, under the mentorship of Division 28 member Dr. Jessica Weafer. Thus far, Justin's research has been focused on the reciprocal relationship between drinking behaviors and sleep. Justin is excited to join Division 28 and looks forward to getting to know other members.



A Very Special Thank You to our Corporate Affiliates



For more on Friends Research Institute, please visit their website: <https://friendsresearch.org/>



For more on Ashley, please visit their website: <https://www.ashleytreatment.org/>

Pinney Associates

For more on Pinney Associates, please visit their website: <https://www.pinneyassociates.com/>



For more on Med Associates Inc., please visit their website: <https://www.med-associates.com/>



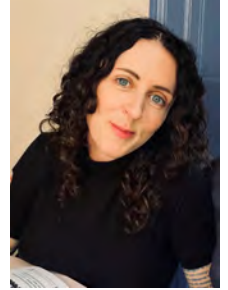
For more on Harrison assessments, please visit their website:
<https://www.harrisonassessments.com/>

Upcoming Events

Kirsten E. Smith, Ph.D.

2022 Annual APA Convention

The 130th annual American Psychological Association convention is scheduled to be held in-person + virtual, August 3-5, 2023. Please visit <https://convention.apa.org/> for convention details and registration information. You can also visit the APA Division 28 [News and Events](#) section of our website to learn about other upcoming events and meetings. To submit an announcement of an upcoming event please send information or flyers to the newsletter editor, Kirsten E. Smith (kirsten.smith@nih.gov) or message.



Psychopharmacology and Substance Use News Editorial Policy

Psychopharmacology and Substance Use News is a thrice-yearly publication of Division 28. It is devoted to keeping members informed about the activities of Division 28 and to news and comments concerning all aspects of psychopharmacology and substance use. Articles, comments, announcements, and advertisements should be sent to the editor, Kirsten E. Smith (kirsten.smith@nih.gov).

Explore content from archived Division 28 newsletters [here!](#)

Division 28 Membership Information

Justin Yates, Ph.D.



Individual Memberships

Division 28 is committed to:

- Basic and Applied Research
- Undergraduate, Graduate, and Postdoctoral training
- Evidenced-based Clinical Practice
- Public Service and Advocacy

We accept APA members and non-members, and have different membership levels available for students, early career psychologists (terminal degree within the past 7 years), and regular members. Members receive a thrice-yearly newsletter, and are eligible for 1 of 3 annual awards (Outstanding Dissertation, Early Career Psychopharmacologist, Med Associates Brady/Schuster Award). See the previous award winners at our Division 28 [awards page!](#)

Please consider joining or renewing your membership! Contact our membership chair, Justin Yates (yatesj1@nku.edu) or visit our Division 28 [membership page](#) on our website for information.

Corporate Affiliate Memberships

Corporate contributions support efforts in research, practice, and education. A membership contribution of \$1000 is tax deductible.*

Division 28 is pleased to offer the following benefits to our corporate affiliate members:

- Access to thrice yearly newsletter
- Acknowledgement of support with corporate logo in newsletter
- Newsletter acknowledgement hyperlinked to corporate website, and available to all through newsletter posting on the Division 28 website

- Recognition of corporate support at annual APA membership meeting
- Liaison(s) eligible to subscribe to Division members-only listserv
- Liaison(s) participation in active and growing Division 28 social media presence
- Receive overview of relevant programming at APA convention

Please refer to the website for questions regarding Division 28 [Corporate Affiliate Membership](#) or contact:

Dr. Thomas Gould (Division 28 President) at tug70psu.edu or **Dr. Evan Herrmann** (Division 28 Treasurer) at evan.herrmann@nih.gov

**This is the recommended level of support. Any corporate contributions are tax exempt, and our tax number will be supplied upon request. Other levels of support are available and appreciated.*

Experimental and Clinical Psychopharmacology

Outgoing Editor: William W. Stoops, Ph.D.

Incoming Editor: Kelly E., M.B.A., Ph.D.

TABLE OF CONTENTS: 2023 | VOLUME 31 | ISSUE 2 (April)

1. [Implications of epidemic-pandemic convergence for routine care adoption of contingency management: A case study.](#)
Pages 295-299. Regnier, Sean D.; DeFulio, Anthony.
2. [To treat or not to treat? High-potency benzodiazepine use in a case of comorbid hallucinogen persisting perception disorder and alcohol use disorder.](#)
Pages 300-304. Christensen, Julie A.; Fipps, David C.; Bostwick, J. Michael.
3. [Dimensions of binegativity differentially predict drinking to cope motivations and alcohol use severity among bisexual women.](#)
Pages 305-311. Schulz, Christina T.; Stamates, Amy L.; Ehlke, Sarah J.; Kelley, Michelle
4. [A crowdsourcing survey study on the subjective effects of delta-8-tetrahydrocannabinol relative to delta-9-tetrahydrocannabinol and cannabidiol.](#)
Pages 312-317. Bergeria, Cecilia L.; Strickland, Justin C.; Spindle, Tory R.; Kalaba, Maja; Satyavolu, Prem Umang; Feldner, Matthew; Vandrey, Ryan; Bonn-Miller, Marcel; Peters, Erica N.; Weerts, Elise.
5. [Initial development and validation of a brief assessment of marijuana demand among young adult college students.](#)
Pages 318-323. Yurasek, Ali M.; Berey, Benjamin L.; Pritschmann, Ricarda K.; Murphy, Cara M.; Aston, Elizabeth R.
6. [Decision-making tendencies and voucher spending independently support abstinence within contingency management for methamphetamine use disorder.](#)
Pages 324-329. Lake, Marilyn T.; Krishnamurti, Tamar; Murtaugh, Kimberly Ling; van Nunen, Lara J.; Stein, Dan J.; Shoptaw, Steven.
7. [The relationship between nonsystematic delay discounting and low-quality survey responses in a sample of smokers: ROC curve analysis.](#)
Pages 330-335. Yeh, Yu-Hua; Freitas-Lemos, Roberta; Craft, William H.; Bickel, Warren K.
8. [The interactive effects of JUUL flavor and nicotine concentration on addiction potential.](#)
Pages 336-342. Peasley-Miklus, Catherine; Klemperer, Elias M.; Hughes, John R.; Villanti, Andrea C.; Krishnan-Sarin, Suchitra; DeSarno, Michael J.; Mosca, Letizia A.; Su, Alan; Cassidy, Rachel N.;

- Feinstein, Marc Jerome P.
9. [Characterizing sign-tracking behavior in female Japanese quail \(*Coturnix japonica*\)](#).
Pages 343-349. Radevski, Mia E.; Rice, Beth Ann.
 10. [Conditioned anti-immobility by ketamine: A comparison to escitalopram and bupropion](#).
Pages 350-361. Melanson, Brett; Wolter, Michael; Leatham, Zion; Lapointe, Thomas; Kennedy, Sidney; Leri, Francesco.
 11. [Effect of the glucocorticoid receptor antagonist PT150 on acquisition and escalation of fentanyl self-administration following early-life stress](#).
Pages 362-369. Bardo, Michael T.; Chandler, Cassie M.; Denehy, Emily D.; Carper, Benjamin A.; Prendergast, Mark A.; Nolen, Tracy L.
 12. [The impact of depression on opioid withdrawal symptoms among smokers with opioid use disorder receiving medication-assisted opioid detoxification](#).
Pages 370-377. Abarno, Cristina N.; Chapman, Hannah M.; Copeland, Amy L.
 13. [Latent factor structure of behavioral economic heroin and cocaine demand curves](#).
Pages 378-385. Schwartz, Lindsay P.; Toegel, Forrest; Devine, Jaime K.; Holtyn, August F.; Roma, Peter G.; Hursh, Steven R.
 14. [From if-then to here and now: Using personalized counterfactuals from past negative experiences to reduce future alcohol consequences](#).
Pages 386-396. Smallman, Rachel; Arthur, Kianna M.; Dvorak, Robert D.; Fields, Sherece A.
 15. [A cluster analysis of mothers of reproductive age based on their attitude and risk of alcohol use](#).
Pages 397-403. Hayashi, Yusuke; Hantula, Donald A.; Washio, Yukiko.
 16. [Physical activity reduces alcohol consumption induced by reward downshift](#).
Pages 404-413. Castejón, Elena; Fuentes-Verdugo, Esmeralda; Pellón, Ricardo; Torres, Carmen.
 17. [A longitudinal examination of alcohol use and emotion dysregulation in adolescence](#).
Pages 414-422. King, Shelby A.; Hubbard, Sterling M.; Teeters, Jenni B.; Brausch, Amy M.
 18. [Cluster-b personality disorder traits and impulsivity: Indirect associations with alcohol use severity through positive alcohol expectancies](#).
Pages 423-432. Guillot, Casey R.; Lucke, Heather R.; Ramsey, Alexandria J.; Kearns, Nathan T.; Blumenthal, Heidemarie; Berman, Mitchell E.
 19. [Pain and alcohol consumption in virtual reality](#).
Pages 433-442. Gilmour, Christina; Blaes, Shelby; Bush, Nicholas J.; Vitus, Darya; Carpenter, Ryan W.; Robinson, Michael; Boissoneault, Jeff.
 20. [Interactive effects of protonated nicotine concentration and device power on ENDS nicotine delivery, puff topography, and subjective effects](#).
Pages 443-454. Eversole, Alisha; Budd, Serenity; Karaoghlanian, Nareg; Lipato, Thokozeni; Eissenberg, Thomas; Breland, Alison B.
 21. [Young adults' beliefs about modern oral nicotine products: Implications for uptake in nonvapers, dual use with e-cigarettes, and use to reduce/quit vaping](#).
Pages 455-463. Han, Dae-Hee; Cho, Junhan; Harlow, Alyssa F.; Tackett, Alayna P.; Vogel, Erin A.; Wong, Melissa; Barrington-Trimis, Jessica L.; Lerman, Caryn; Unger, Jennifer B.; Leventhal, Adam M.

22. [The effect of acute nicotine administration on human delay cued and context fear conditioning.](#)
Pages 464-474. Palmisano, Alexandra N.; Gould, Thomas J.; Astur, Robert S.
23. [Incorporating socioeconomic status into studies on delay discounting and health via subjective financial status: An initial validation in tobacco use.](#)
Pages 475-481. Najdzonek, Peter; McIntyre-Wood, Carly; Amlung, Michael; MacKillop, James.
24. [Changes in secondary substance use after the onset of the COVID-19 pandemic among people who use cannabis: Findings from a web-based sample of adults in the United States.](#)
Pages 482-490. Lake, Stephanie; Assaf, Ryan D.; Gorbach, Pamina M.; Cooper, Ziva D.
25. [Reliability of an adaptive marijuana purchase task.](#)
Pages 491-497. Bush, Nicholas J.; Ferguson, Erin; Boissoneault, Jeff; Yurasek, Ali M.
26. [Sources for prescription stimulant misuse: A person-centered approach to understanding links to substance use and psychiatric impairment.](#)
Pages 498-506. Holt, Laura J.; Looby, Alison; Schepis, Ty S. Stimulant Norms and Prevalence (SNAP) Study Team.
27. [Applications of isradipine in human addiction studies: A systematic literature review.](#)
Pages 507-522. Natal, Samantha; Young, Cara C.; Kaur, Karamveer; Gebhardt, Eli S.; Perrone, Alexander; Morikawa, Hitoshi; Tirado, Carlos; Smits, Jasper A. J.
28. [The effect of stress on opioid addiction-related behaviors: A review of preclinical literature.](#)
Pages 523-540. Kamens, Helen M.; Flarend, Geneva; Wickenheisser, Anna; Horton, William J.; Cavigelli, Sonia A.
29. [A systematic review and meta-analysis of interventions to induce attempts to quit tobacco among adults not ready to quit.](#)
Pages 541-559. Klemperer, Elias M.; Streck, Joanna M.; Lindson, Nicola; West, Julia C.; Su, Alan; Hughes, John R.; Carpenter, Matthew J.
30. [Contingency management for smokers with mental health disorders and smoking-sensitive conditions caused or exacerbated by tobacco use: A review of existing studies, intervention parameters, and research priorities.](#)
Pages 560-573. González-Roz, Alba; Secades-Villa, Roberto.

TABLE OF CONTENTS: 2023 | VOLUME 31 | ISSUE 1 (February)

1. [Ethanol induces a dose-dependent conditioned place preference and conditioned place aversion in Japanese quail.](#)
Pages 1-6. Eaton, Shannon E.; Dzhalala, Svetlana; Robinson, Layne E.; Radevski, Mia E.; Akins, Chana K.
2. [A novel remote TSST procedure reliably increases stress reactivity in cannabis users: A pilot study.](#)
Pages 7-13. Reed, Stephanie C.; Oliva, Alyssa; Gomez, Samantha G.; Evans, Suzette M.
3. [Differences in cannabis use characteristics, routines, and reasons for use among individuals with and without a medical cannabis card.](#)
Pages 14-22. Bery, Benjamin L.; Aston, Elizabeth R.; Gebru, Nioud Mulugeta; Merrill, Jennifer E.
4. [Examining the latent factor structure of a hypothetical cigarette purchase task among pregnant women.](#)
Pages 23-28. Evemy, Carolyn G.; Kurti, Allison N.; Skelly, Joan M.; Medina, Norman A.; Higgins,

Stephen T.

5. [Narrative theory v: Narratives about penalties resulting from illegal tobacco purchases increase psychological distress.](#)
Pages 29-36. Freitas-Lemos, Roberta; Tegge, Allison N.; Athamneh, Liqa N.; Tomlinson, Devin C.; Stein, Jeffrey S.; Bickel, Warren K.
6. [Threshold for the pleasurable effects of nicotine are lower than its reinforcing effects during self-administration.](#)
Pages 37-45. MacLean, R. Ross; Eid, Tore; Parida, Suprit; Gueorguieva, Ralitza; DeVito, Elise E.; Sofuoglu, Mehmet.
7. [Characterizing different-flavored e-cigarette solutions from user-reported sensory attributes and appeal.](#)
Pages 46-56. Anderson, Marissa K.; Whitted, Lauren; Mason, Tyler B.; Pang, Raina D.; Tackett, Alayna P.; Leventhal, Adam M.
8. [Alcohol craving in the natural environment: Moderating roles of cue exposure, drinking, and alcohol sensitivity.](#)
Pages 57-71. Kohen, Casey B.; Cofresí, Roberto U.; Bartholow, Bruce D.; Piasecki, Thomas M.
9. [Differential effects of UPPS-P impulsivity on subjective alcohol response and craving: An experimental test of acquired preparedness.](#)
Pages 72-83. Waddell, Jack T.; Corbin, William R.; Leeman, Robert F.
10. [Validation of the revised Alcohol Expectancy Task \[rAET\].](#)
Pages 84-91. Cook, Megan; Labhart, Florian; Monk, Rebecca; Kuntsche, Sandra; Heim, Derek; Qureshi, Adam; Kuntsche, Emmanuel.
11. [Affect and alcohol consumption: An ecological momentary assessment study during national lockdown.](#)
Pages 92-105. Tovmasyan, Anna; Monk, Rebecca L.; Qureshi, Adam; Bunting, Brendan; Heim, Derek.
12. [Association of therapeutic and recreational reasons for alcohol use with alcohol demand.](#)
Pages 106-115. Ferguson, Erin; Fiore, Andrew; Yurasek, Ali M.; Cook, Robert L.; Boissoneault, Jeff.
13. [Disentangling the within- and between-person aspects of implicit alcohol associations on hazardous drinking.](#)
Pages 116-126. Shono, Yusuke; Baldwin, Scott A.; Peterson, Kirsten P.; Neighbors, Clayton; Lindgren, Kristen P.
14. [Interest in and perceived effectiveness of contingency management among alcohol drinkers using behavioral economic purchase tasks.](#)
Pages 127-139. Traxler, Haily K.; Kaplan, Brent A.; Rzeszutek, Mark J.; Franck, Christopher T.; Koffarnus, Mikhail N.
15. [Interoceptive attention or merely distraction? An examination of the effects of brief breath counting training on stress-induced alcohol-seeking behavior.](#)
Pages 140-147. Herchenroeder, Luke; Williams, Eleanor; Wedell, Emma; Sorid, Samantha D.; Bakou, Alexandra Elissavet; Bravo, Adrian J.; Hogarth, Lee.
16. [Impact of COVID-19 on alcohol use disorder recovery: A qualitative study.](#)
Pages 148-162. Scarfe, Molly L.; Haik, Amanda K.; Rahman, Liah; Todi, Akshiti A.; Kane, Claire;

Walji, Alyna; Dickerman, Sarah R.; Kelly, John F.; MacKillop, James.

17. [Posttraumatic stress as a moderator of the association between HPA-axis functioning and alcohol use disorder among a community sample of women currently experiencing intimate partner violence.](#)
Pages 163-173. Goldstein, Silvi C.; Schick, Melissa R.; Weyandt, Lisa L.; Sullivan, Tami P.; Saint-Eloi Cadely, Hans; Weiss, Nicole H.
18. [External validity of analogue sexual risk laboratory data.](#)
Pages 174-185. Simons, Jeffrey S.; Maisto, Stephen A.; Palfai, Tibor P.
19. [Can initial experiences with drugs predict future drug abuse risks?](#)
Pages 186-193. Varshneya, Neil B.; Dunn, Kelly E.; Grubb, Caitlyn J.; Okobi, Sandra I.; Huhn, Andrew S.; Bergeria, Cecilia L.
20. [A double-blind, randomized, placebo-controlled, pilot clinical trial examining buspirone as an adjunctive medication during buprenorphine-assisted supervised opioid withdrawal.](#)
Pages 194-203. Bergeria, Cecilia L.; Tan, Hongjun; Antoine, Denis; Weerts, Elise M.; Huhn, Andrew S.; Hobelmann, J. Gregory; Dunn, Kelly E.
21. [Choice between food and cocaine reinforcers under fixed and variable schedules in female and male rhesus monkeys.](#)
Pages 204-218. Zamarripa, C. Austin; Doyle, William S.; Freeman, Kevin B.; Rowlett, James K.; Huskinson, Sally L.
22. [Binding potential changes of SERT in patients with depression are associated with remission: A prospective \[¹²³I\]β-CIT-SPECT study.](#)
Pages 219-227. Krause, Daniela; Chrobok, Agnieszka; Karch, Susanne; Keeser, Daniel; Manz, Kirsi M.; Koch, Walter; Brendel, Matthias; Rominger, Axel; Koller, Gabi; Behle, Nina; Pogarell, Oliver.
23. [Effort-related decision making and cannabis use among college students.](#)
Pages 228-237. Acuff, Samuel F.; Simon, Nicholas W.; Murphy, James G.
24. [Can I see some ID? Examining validity of the marijuana purchase task among late adolescent cannabis users.](#)
Pages 238-247. Schultz, Nicole R.; Aston, Elizabeth R.; Metrik, Jane; Ramirez, Jason J.
25. [Effect of cannabinoids on brain metabolites: A review of animal and human studies.](#)
Pages 248-262. Ma, Jiyoung; Lyoo, In Kyoon; Renshaw, Perry F.; Yurgelun-Todd, Deborah A.
26. [Cannabis and emotion processing: A review of behavioral, physiological, and neural responses.](#)
Pages 263-279. MacKenzie, Alyssa; Cservenka, Anita.
27. [Using social network methodology to examine the effects of exposure to alcohol-related social media content on alcohol use: A critical review.](#)
Pages 280-293. Strowger, Megan; Braitman, Abby L.

Training and Career Announcements

VERMONT CENTER ON BEHAVIOR AND HEALTH POSTDOCTORAL RESEARCH FELLOWSHIPS

The Vermont Center on Behavior and Health (VCBH) located at the University of Vermont (UVM) Larner College of Medicine (LCOM) announces **TWO** NIH postdoctoral research fellowship opportunities in our internationally-recognized center of excellence for substance use disorder research.

Working with **Dr. Stephen Higgins**, the fellow will work on randomized controlled trials of low nicotine content cigarettes and e-cigarettes as well as secondary analyses of cohort and trial data. Working with **Dr. Sarah Heil**, the fellow will help to lead research on the sexual and reproductive health needs of women with substance use disorders.

Drs. Higgins, Heil, and our 30-year training program have an exceptional track record of helping fellows establish successful careers as independent investigators.

Eligibility: Applicants must have completed their training in psychology or a related discipline and may have to be U.S. citizens or permanent residents. Outstanding trainees are selected on the basis of scholastic record, productivity and commitment to a career in substance use disorder research. Individuals must be highly motivated, possess initiative, and a strong desire to learn and expand their interests and expertise.

Appointment: 2-3 years

Benefits: Stipend and travel fund supported by an NIH Institutional Training Award

To apply: Send a cover letter, curriculum vitae, statement of research interests, and 3 letters of reference to: Dr. Sarah Heil (sarah.heil@uvm.edu).

For more information: Contact Mr. Charlie Brooks (Charlie.Brooks@uvm.edu).

About us: VCBH, established in 2013, is an interdisciplinary center of research excellence committed to investigating relationships between personal behavior patterns (i.e., lifestyle) and risk for chronic disease and premature death. Unhealthy, or risk behaviors, are overrepresented among socioeconomically disadvantaged populations and are major contributors to the problem of health disparities. VCBH's work seeks to develop effective interventions and policies to promote healthy behavior. The VCBH resides within the UVM LCOM Department of Psychiatry, with additional investigators, collaborators, and advisors across 15 LCOM academic departments, seven UVM colleges,

and five other universities. The VCBH is further strengthened by interdisciplinary collaborations with key community healthcare leaders and distinguished scientific advisory panels.

Burlington, Vermont is located in the beautiful Lake Champlain region and has continually been voted one of the nicest cities in which to live as well as one of America's most "fit" cities due to the four seasons of outdoor activities. Burlington is a great place for families, boasting

excellent schools, a culturally-rich environment, and close proximity to Boston and Montreal.

The University is especially interested in candidates who can contribute to the diversity and excellence of the academic community through their research, teaching, and/or service. Applicants are requested to include in their cover letter information about how they will further this goal.

The University of Vermont is an Equal Opportunity/Affirmative Action Employer. All qualified applicants will receive consideration for employment without regard to race, color, religion, sex, sexual orientation, gender identity, national origin, disability, protected veteran status, or any other category legally protected by federal or state law. The University encourages applications from all individuals who will contribute to the diversity and excellence of the institution. Applications will be accepted until the positions are filled.

JOHNS HOPKINS UNIVERSITY SENIOR RESEARCH ASSISTANT

The Department of Mental Health seeks a **Sr. Research Assistant** who, under the supervision of the PI, will be responsible for coordinating research activities and assisting with project management of the Digital Wellbeing in Saudi Arabia project. This research study will evaluate the impact of Internet, social media, and game use on the health of Saudi Arabian citizens, particularly youth and adolescents. Working closely with collaborators in Saudi Arabia and elsewhere, our team will (1) explore Internet and media use from a digital balance perspective to investigate how the Internet provides benefits as well as risks to wellbeing and (2) develop an intervention to promote digital balance.

Specific Duties & Responsibilities

Assist in managing a multiphase international project, including coordination and implementation of planned preparation, research, and dissemination tasks.

- Assist with protocol development, study implementation and research dissemination support to complex studies, maintaining good working knowledge of all assigned tasks.
- Review, edit and finalize study-related documents (protocols, data collection materials, study SOPs) in collaboration with PIs and study teams.
- Supervise students in conducting literature reviews and data analysis.
- Plan, organize, and create meeting agendas, materials, and draft minutes for various meetings.
- Format abstracts/manuscripts and submit to conferences/journals. Track scientific conferences/events and facilitate participation of research team.

- Assist with recruitment of international stakeholders.
- Provide assistance in developing effective visualizations, posters, and presentations for scientific conferences and donor reporting.
- Assist research teams in performing quantitative as well as qualitative data analysis.
- Plan and co-produce translation and dissemination activities including social media posting, blogging, and arranging media interviews.
- Respond to job seeker inquiries and assess applicant CVs.
- Schedule and conduct initial interviews and request follow up meetings.
- Determine and track available studies for students to work on or manuscripts to assist with.
- Onboard student research assistant staff

Special Knowledge, Skills & Abilities

- The successful applicant will demonstrate strong project management skills and experience and an ability to work well with other professionals with minimal supervision.
- Project coordination/management experience in global sponsored projects a plus.
- Must be comfortable being part of a diverse professional team.
- Must be able to communicate effectively and have strong writing and editorial skills, strong organizational skills, and excellent attention to detail.
- Ability to function independently with a high degree of motivation essential.
- Ability to manage multiple and competing priorities; excellent time management skills.
- Knowledge of R, STATA, and/or Atlas.ti (or other qualitative analysis software), Dropbox/OneDrive (or other cloud storage solution), Slack, and Zotero (or other bibliographic management software).
- Ability to create and manage websites for the project.

Technical Qualifications/Specialized Certifications

Proficient in MS Office applications: Word, Excel, PowerPoint, and experience with Adobe Acrobat.

Minimum Qualifications

Bachelor's Degree in related discipline and two years of related experience. Additional graduate level education may substitute for required experience, to the extent permitted by the JHU equivalency formula.

Preferred Qualifications

MPH or MS in public health; understanding of the Arab world and ability to speak Arabic a plus; knowledge of

quantitative and/or qualitative research practices and principles.

Application Link: <https://jobs.jhu.edu/job/Baltimore-Sr-Research-Assistant-MD-21205/993151400/>

We aim for an inclusive workplace and welcome applications from members of groups that are traditionally underrepresented in science including people with disabilities, members of the LGBTQ+ and/or Black, Indigenous, (and) People of Color communities.

NATIONAL INSTITUTE ON DRUG ABUSE, INTRAMURAL RESEARCH PROGRAM POSTDOCTORAL RESEARCH FELLOWSHIP TRANSLATIONAL ADDICTION MEDICINE

The Real-world Assessment, Prediction, and Treatment (RAPT) Unit (<https://irp.drugabuse.gov/staff-members/david-epstein/>) is part of the National Institute on Drug Abuse (NIDA) Intramural Research Program (IRP), National Institutes of Health (NIH), Department of Health and Human Services (DHHS). We are recruiting a Postdoctoral Fellow. The workplace is the Translational Addiction Medicine Branch (TAMB), NIDA IRP, Baltimore, Maryland.

RAPT conducts human research, both on site at NIDA's laboratory facilities and remotely via smartphone-based or online data collection. The Postdoctoral fellow will be involved in a variety of projects, under the supervision and mentoring of Dr. David Epstein, Tenure-Track Clinical Investigator and Chief of RAPT. The Postdoctoral fellow will focus on development and testing of content for a mobile intervention for substance-use disorders (SUDs)—specifically, what is sometimes called a JITAI (just-in-time adaptive intervention). This project is an outgrowth of RAPT's ongoing work with smartphone-based EMA (ecological momentary assessment) and has been progressing through initial formative research—specifically, in-depth interviews with members of relevant populations. The Postdoctoral fellow will be expected to continue the project but also to extend it creatively, addressing their own specific research questions and their own broad vision of what mobile interventions should do. This endeavor will require a strong background in both the phenomenology and the treatment of SUDs. It will also benefit from a degree of skepticism about mobile interventions (skepticism sufficient to improve them and to acknowledge limitations in success). The ideal candidate will have the critical-thinking skills needed to develop a research protocol (most likely a microrandomized field study of different types of momentary JITAI content, though this can be negotiated), present data, and develop and publish papers, and also a strong capacity for empathetic personal interactions with research participants.

A Ph.D., M.D., or equivalent degree is required. The fellowship is open to US and foreign citizens. The selected candidate will have access to lectures, educational, mentoring and grant training opportunities at the RAPT and TAMB levels, the NIDA IRP level, and NIH-wide.

To apply, please send current CV, a statement of research background and interests, and at least 3 reference contacts to: David Epstein, Ph.D., email: david.epstein@nih.gov The NIH is dedicated to building a diverse community in its training and employment programs. DHHS and NIH are Equal Opportunity Employers.

**UNIVERSITY OF NEVADA, RENO
ASSISTANT OR ASSOCIATE PROFESSOR**

The University of Nevada, Reno, School of Public Health seeks a social/behavioral public health scientist for a state-funded, nine-month, tenure-track faculty position at the Assistant or Associate Professor rank starting in Fall 2023. We invite applicants from all social/behavioral public health subject matter areas to apply. This search is particularly interested in researchers who focus on aging or other topic areas that align with current SBH faculty research areas.

The successful applicant is expected to teach at all levels (undergraduate, masters and doctoral courses), develop and maintain an independent program of scholarship, contribute to the growth of the School of Public Health, and engage in University, community, and professional service.

Required Qualifications:

- Earned doctorate (PhD, DrPH, ScD) in social/behavioral science or a closely related field, preferably from an accredited School of Public Health
- Ability to develop and maintain an independent program of research, including ability to secure external research support
- Demonstrated ability or potential to teach graduate and undergraduate students
- Demonstrated ability to interact effectively with individuals from diverse communities and cultures, as well as in a multidisciplinary environment
- For the Associate Professor rank, the applicant must have established an independent research program and have experience in teaching graduate students.

Attach the following attachments to your application and submit through this

link: https://nshe.wd1.myworkdayjobs.com/UNR-external/job/University-of-Nevada-Reno—Main-Campus/Assistant-Associate-Professor-School-of-Public-Health_R0135668

Resume/CV, Cover Letter, Contact Information for Three Professional References. Please write a brief statement (one page maximum) about how you would contribute toward our mission of creating a culturally inclusive environment in the role for which you are applying. Teaching philosophy and Statement of research interests should also be included. Position is open until filled.

**THE UNIVERSITY OF CHICAGO
POSTDOCTORAL FELLOW**

The University of Chicago has openings for post-doctoral trainees in addiction research. This NIDA Training

Program offers exciting interdisciplinary experiences across a range of areas, including molecular, behavioral, epidemiological and treatment research. In addition to their primary research projects, trainees engage in diverse training experiences through externships, seminars, career development workshops, co-mentorship opportunities and interactions with visiting scientists. Primary trainers include faculty from the Departments of Neurobiology (Zhuang, Green), Anesthesia and Critical Care (McGehee, Xu), Psychiatry and Behavioral Science (de Wit, King), Public Health Sciences (Hedeker) and the School for Social Service Administration (Pollack, Schneider). This program offers a lively intellectual environment that emphasizes cross-disciplinary communication and collaboration.

Post-doctoral candidates should contact the faculty member with whom they wish to work and submit a cover letter and curriculum vitae to Lili Gonzalez dlgonzalez@uchicago.edu.

Appointments are usually for two years.

Applicants must be US citizens or permanent residents.

The NIDA T32 Training Program at The University of Chicago provides a unique multidisciplinary opportunity for both pre and postdoctoral trainees interested in addiction and substance abuse research. Our training faculty include world-renowned experts in addiction research at every level, from molecular genetics and cellular approaches, to behavior, epidemiology and treatment. With this breadth of faculty expertise, we aim to educate trainees in the multiple dimensions of this complex social and biological problem.

The University of Chicago has a long record of commitment to drug abuse research, beginning in 1972 when the NIDA-funded Drug Abuse Research Center was established. Since then, our faculty have included pioneers of addiction research, including Jerry Jaffe, Lewis Seiden, Daniel X Freedman, Bob Schuster, Marian Fischman and Chris-Ellyn Johanson. Building on this long tradition, current faculty include leaders in neuropharmacology and behavioral pharmacology of addiction, using both animal models and human subjects, as well as key epidemiological and public policy research. The University has recently expanded its commitment to neuroscience through new investments in genetics as well as systems/computational neuroscience and clinical research. These significant investments create a rich intellectual environment with exciting new opportunities addiction research.

**MEDICAL UNIVERSITY OF SOUTH CAROLINA (MUSC)
POSTDOCTORAL FELLOWSHIP**

The [MUSC Department of Psychiatry](#) and the [Hollings Cancer Center](#) announce a research fellowship opportunity in behavioral health (smoking cessation, mood disorders) and technology-based interventions (telehealth, remote clinical trials). The position is for one year, which upon favorable progress and conditional upon funding may be renewed for a second year. Working with [Dr. Jennifer Dahne](#), the fellow will assist with ongoing clinical trials

related to smoking cessation and depression treatment. Additional ongoing projects center around development of innovative methods to improve the feasibility and rigor of remote trials. These projects are funded via multiple NIH grants including R01s and Small Business Technology Transfer (STTR) awards. Opportunities exist to develop new research projects within ongoing studies and for secondary analyses of existing datasets. Interest in academic entrepreneurship is welcomed, though not required. The candidate will have opportunities to collaborate on and lead scientific articles, collaborate on new NIH grant applications, and receive mentoring in developing new areas of grant-funded research relevant to behavioral health and telehealth. Applications from candidates that can extend our research in new and exciting directions (e.g., oncology, comorbid mental health and substance use disorders, novel technologies) would be particularly welcomed, and possibilities exist for pilot projects to advance future funding potential. In addition, the ideal candidate will a) have a PhD in clinical psychology (or related field, including health or biobehavioral psychology) from an APA accredited program, b) strong research experience and interest in behavioral health and technology-based interventions, c) record of research productivity and excellence in scientific writing, d) statistical proficiency, and e) career goals consistent with grant-funded academic medicine. Salary will exceed NIH standards for postdoctoral stipends, the position will include full benefits, and the fellow will be provided with additional financial support to be used for pilot research, travel, and other expenses that will help ensure career success. [Historic Charleston](#) is a beautiful city in coastal South Carolina, consistently rated as a top city in the United States, with access to fine dining, museums, and beaches available to all. To apply, send 1) cover letter, 2) CV, 3) short statement of research goals/interests, and 4) list of potential references to: Jennifer Dahne, PhD (dahne@musc.edu). Applications will be reviewed on a rolling basis and the position will remain open until filled. Priority will be given to applications received by January 31, 2023. Anticipated start date is flexible within 2023.

BABSON COLLEGE RESEARCHERS & INNOVATORS OF SUD PREVENTION AND TREATMENT SOLUTIONS

Thanks to the generous grant from NIDA, we have created **L-SPRINT**: the Life Sciences Entrepreneurial Product Development Immersion for New Technologies and Solutions at Babson College, scheduled for this August 14-18.

L-SPRINT seeks to facilitate the commercialization of innovative solutions for substance use disorders (SUD) by building the entrepreneurship skills of the scientists and researchers who are innovating in this critical area of concern.

We're seeking applications from **researchers and innovators of SUD prevention and treatment solutions with a hunger to explore their potential as entrepreneurs**. If accepted, they will:

- Receive a full program scholarship, funded by NIDA.
- Experience an intensive experience grounded in Babson's respected Entrepreneurial Thought & Action® methodology.
- Build a more valuable network through collaboration with peer innovators and exposure to the influential Boston-area life sciences innovation ecosystem.
- Generate an entrepreneurial development action plan and receive further future mentoring.

LEARN MORE: <https://cpdd.org/job/researchers-and-innovators-of-sud-prevention-and-treatment-solutions-babson-college/>

UNIVERSITY OF UTAH OPEN RANK FACULTY POSITION

Intervention The Department of Internal Medicine, Division of Epidemiology, at the University of Utah is seeking a faculty member to carry out addiction related research and to promote and facilitate collaborative studies addiction health services or addiction intervention related research.

Candidates with experience in single or multisite, health system focused, prospective research studies are encouraged to apply. A multitude of opportunities for collaborative research exist in areas such as clinical and population health decision support systems, behavioral health interventions, and epidemiology at the University of Utah Health Sciences Center and Salt Lake City Veterans Health Care System. This position will specifically work to continue to build the behavioral health and addiction sciences research portfolio and acumen of the University of Utah School of Medicine.

To be considered applicants must possess a doctorate degree in related discipline, currently have secured independent funding, demonstrate authorship, have 3 years of experience **or** training in a related discipline and possess excellent interpersonal and communication skills.

LEARN MORE: <https://cpdd.org/job/open-rank-faculty-position-university-of-utah/>

Division 28 Executive Committee

Elected Officers

- President: Thomas J. Gould
- Past President: Ryan Vandrey
- President-Elect: Jermaine Jones
- Council Representative: William W. Stoops
- Members-at-Large: Cecilia Bergeria, Dustin Stairs, Cassie Gipson-Reichhardt

Appointed Officers/Committee Chairs

- Secretary: Matthew Kirkpatrick
- Treasurer: Evan Herrmann
- Newsletter Editor: Kirsten E. Smith
- Divisional Awards: Richard Yi
- Membership: Justin Yates
- Fellows: Micky Koffarnus
- Program Chair (2022: Jacob Borodovsky)
- Program Chair (2023: Jessica Weafer)
- Finance Committee Chair: Andrew Huhn
- Equity, Diversity, & Inclusion: Meredith Berry
- Continuing Education: M. Marlyne Kilbey

Early Career Appointed Liaisons/Monitors

- Student Representative: Robert LeCompte & Kathleen McNealy

- Student Representative Social Media Chair: Andrea Vasquez Ferreiro
- Early Career Psychologist Representative: Justin Strickland & Brett Gelino
- Archivist: Ty Schepis

Appointed Liaisons/Monitors

- Board of Educational Affairs: M. Marlyne Kilbey
- Electronic Information: Ronald Wood
- Liaison to Committee on Animal Research and Ethics: Mark Smith
- Women's Network Representative: Mary Cain
- Continuing Education Committee Chair: M. Marilyne Kilbey
- International Affairs Committee: Hendree Jones
- Liaison to Division 50: Linda Sobell
- Liaison to Division 55: William W. Stoops
- Liaison to Science Directorate: Rick Bevins
- Liaison to the Board for the Advancement of Psychology in the Public Interest: Martin Iguchi