

## PSYCHOPHARMACOLOGY & SUBSTANCE ABUSE NEWS

### From the President's Desk

- Anthony Liguori, Ph.D.

Greetings, Division 28 members! With gratitude and excitement, I welcome the honor and privilege of serving as your 44<sup>th</sup> President this year.

### Executive Committee Changes for 2013

On behalf of the Division, I offer my thanks to 2012 President Rick Bevins. Rick set a superb example for all Division Presidents with his advocacy for funding and implementation of procedures to increase membership. Rick's continued commitment to the Division is reflected in his 2013 roles as Past-President and Liaison to the Science Directorate. As I begin my term, I am grateful for Rick's mentorship and insights, as well as those of outgoing Past-President Mark Greenwald.

The Division also thanks Mark Smith for his dual roles as 2012 Convention Program Chair and 2011-2012 Liaison to the Science Directorate. Mark put together a set of lectures, symposia, and posters that, in its strong attendance and continuous intellectual stimulation, is truly a template for Convention programs to come. We are grateful that Mark will be remaining on the Executive Committee in 2013 as Past Program Chair. Kelly Dunn is concluding her term as Early Career Psychologist Representative, but fortunately will continue to provide her consistently outstanding service as Editor of the very Newsletter you are reading right now! Other Executive Committee members whose terms concluded in 2012 were Sarah Tragesser (Early Career Psychologist Representative), Chana Akins (Awards Officer, 2011-2012), Diomaris Jurecska (Student Representative, 2011-2012), Wendy Lynch (Member-at-Large, 2010-2012), and, after a 10-year stint as Women's Network Representative, Nancy Piotrowski. We thank each of them for their time, dedication and important contributions to the Division.

I would also like to welcome the new members of our Executive Committee: President-Elect Ellen Walker, Member-at-Large Cynthia Crawford, Awards Chair Sharon Walsh, Program Chairs Kathryn Saulsgiver (2013, Honolulu) and Richard Allen (2014, Washington DC), Student Representative Alexa Lopez, Early Career Psychologist Representatives Adriana Falco and Diann Gaalema, and Women's Network Representative Carmela Reichel. These individuals



2013; Volume 46, Issue 1

## TABLE OF CONTENTS

From the President's Desk _____	1-4, 6
Upcoming Important Deadlines _____	2
New Research Resources _____	5-6
Statements from Presidential Candidates _____	7-8
Statements from Member-at-Large Candidates _____	9-10
2013 Convention Update _____	11
Student Column _____	12-13
Student Award Deadlines _____	13
Advocacy Update _____	14-15
2013 Visionary Grants and Program Innovation Grant Announcement _____	15
Early Career Psychologist Column _____	16
2013 Division 28 Award Winners _____	17-18
Experimental and Clinical Psychopharmacology	
• Table of Contents 2012, Vol. 20 (6) _____	19
• Table of Contents 2013, Vol. 21 (1) _____	20
Becoming a Member of Division 28 _____	21
Training and Employment Announcements _____	22-24
Corporate Affiliate Members _____	25
Division 28 Executive Committee _____	25

---

### UPCOMING IMPORTANT DEADLINES

APA Board of Scientific Affairs Meritorius Research Service Commendation

- Deadline: 3/1/2013
- <http://www.apa.org/about/awards/bsa-merit.aspx>

APA Board of Scientific Affairs Distinguished Scientific Awards for Early Career Contribution to Psychology

- Deadline: 6/1/2013
- <http://www.apa.org/about/awards/early-career-contribution.aspx>

Award for Distinguished Service to Psychological Science

- Deadline: 4/1/2013
- <http://www.apa.org/about/awards/bsa-distserv.aspx>

Award for Distinguished Scientific Contributions

- Deadline: 6/1/2013
- <http://www.apa.org/about/awards/scientific-contributions.aspx>

F.J. McGuigan Early Career Investigator Research Prize on Understanding the Human Mind.

- Deadline: 3/1/2014
- <http://www.apa.org/apf/funding/mcguigan-prize.aspx>

APA Distinguished Scientific Award for the Application of Psychology

- <http://www.apa.org/about/awards/scientific-contributions.aspx>

The American Psychological Association and its annual convention have been a vital part of my academic identity since I was a graduate student of experimental psychology.

*continued from page 1*

bring varied and stimulating new perspectives to our Executive Committee and will be vital components of the leadership and future of the Division.

### **This Year's Objectives**

The American Psychological Association and its annual convention have been a vital part of my academic identity since I was a graduate student of experimental psychology. My first APA Convention, in 1990 in Boston, was highlighted by B.F. Skinner's standing-room-only keynote address. This was his final public address, given only eight days before his death. He steadfastly defended his behaviorist perspective that emphasized contingencies of reinforcement over introspection. The most controversial part of the talk, still discussed today by those who were in attendance, was his description of cognitive science as "the creationism of psychology". Through two decades, what stayed with me from that session was neither his controversial remarks nor the cheers *and* jeers with which his "creationism" comment was met. Rather, I was struck by the sense of community in that session. The auditorium was filled with brilliant individuals with passionate viewpoints, most of which were bolstered by research experience or theoretical expertise. Dr. Skinner's speech inspired these individuals to share those perspectives in conversation and debate.

At its core, Division 28 is a community of individuals who seek a thorough understanding of the effects of drugs on behavior. As our field continues to face reductions in research funding, including those from the federal sequester, scientific interactions among Division 28 members are more essential than ever. The synergistic benefits of collaborative exchanges underlie my two major initiatives for 2013: the launching of the Collaborative Perspectives on Addiction (CPA) meeting and a doubling of the Division representation of Early Career Psychologists.

### **The Collaborative Perspectives on Addiction meeting: May 3-4 in Atlanta, GA**

The Society of Addiction Psychology (Division 50) and Division 28 have joined forces with APA to create an annual "mid-year" conference. The inaugural CPA conference, scheduled for May 3-4 at the Midtown W. Hotel in Atlanta, has the theme of *Biobehavioral Research & Implications for Practice*. The meeting will integrate animal research, laboratory research with human subjects, and clinical trials. This conference is expected to augment the productivity of Division 28. Over the next few years, the total number of hours available for the Division 28 program in the August APA Convention is going to decrease. CPA provides further opportunities not only to present data, but also to share and discuss common scientific interests with Division 50. Division 50 President Sara Jo Nixon, Sponsorship Co-Chairs John Kelly and Katie Witkiewitz, Conference Treasurer Jennifer Buckman, Communications Manager/Committee on Division-APA Relations Staff Liaison Chad Rummel, and I are looking forward to facilitating lively interchanges and professional development opportunities.

The Program for the inaugural CPA meeting is taking shape and includes the following highlights:

- *Conducting Neuroimaging Studies from a Neuropsychologist's Perspective*, a Pre-Conference Workshop presented by Sarah Mattson. This workshop, for which pre-registration is required, focuses on essential steps in defining effective, productive, and innovative research teams from the perspective of "non-imagers".

*continued from page 3*

- *Peeking Behind the Curtain of the NIH Funding Process: Tips for Preparing a Successful Grant Application*, presented by Harold Perl. Dr. Perl is a 23-year veteran of the National Institute on Drug Abuse and the National Institute on Alcohol Abuse and Alcoholism. He will present an in-depth analysis of the application process that will help investigators at all levels enhance their grantsmanship and increase their chances of success.
- *Keynote addresses by world-renowned researchers Saul Shiffman and Edith V. Sullivan.*
  - Dr. Shiffman is a Fellow of both Division 28 and 50 who has received the Society for Research on Nicotine and Tobacco's Ovid Ferno Award for "groundbreaking advances in clinical research".
  - Dr. Sullivan, an award-winning pioneer in the study of the cognitive and motor impact of alcoholism-related brain injury, will speak on "Alcoholism and the Brain: Road to Ruin and Path to Recovery".
- *Five symposia sessions, each with two options for attendees.* Topics include
  - Behavioral Economic Perspectives on Addiction
  - Biobehavioral Perspectives on Mechanisms of Behavior Change: Brain, Body, Mind, and Context
  - Co-Morbid Inhalant Use and Compulsory Behaviors: Implications for Red-Flag Assessments and Strategies for Clinical Care
  - Interdisciplinary Treatment Teams for Addictive Disorders on College Campuses
  - Mediators of the Association of Depression with Smoking Cessation
  - Medication Development: Translating Research Into Practice
  - Neuroeconomics as a Framework for Translational Research on Addiction
  - The Application of Clinical Neuroscience in Treating Addictive Disorders
  - Understanding and Treating the Co-Occurring Disordered Client
- *Two poster sessions*
- *Two social hours*
- *Group outing to an Atlanta Braves game*

Student and Early Career Psychologist rates are discounted for this meeting. I encourage you to register online for the CPA conference at [www.tinyurl.com/2013CPA](http://www.tinyurl.com/2013CPA), and I look forward to seeing you there!

### **Increasing ECP Membership: How You Can Help Recruit "The Next Sixteen"**

Most new members of APA are at least 40 years old and ten years post-doctorate. Less than half of APA members belong to a Division, and the percent that does belong to a Division is decreasing. The Association and its Divisions are endeavoring to balance these trends with increased recruitment of Early Career Psychologists, defined as individuals within **seven** years receipt of their doctorate. Increased ECP representation has been a goal of our recent Division Presidents, and I fully intend to continue progress toward that goal.

At the time of this writing, there are 481 Members, Associates, and Fellows of Division 28. **Sixteen** of them (3%) are ECPs. For comparison with some thematically related divisions, ECPs comprise 8% of Division 25 (Behavior Analysis) and 13% of Division 50.

At the time of this writing, there are 481 Members, Associates, and Fellows of Division 28.

**Sixteen** of them (3%) are ECPs.

*continued on page 6*

## NEW RESEARCH RESOURCES

- Kelly Dunn, Ph.D. , Newsletter Editor

---

### New NIH Resources To Promote Standardization of Study Outcome Measures

---

NIH has developed several resources (Assessment Center, NIH Toolbox, PROMIS<sup>®</sup>, Neuro-QOL) to provide researchers with evidenced-based outcome measures for a variety of psychological domains. The measures are designed to be brief, easy to administer, and comprehensive. The measures will enrich study outcomes and provide a method for comparing across studies in a manner that will facilitate systematic and meta-analytic reviews of important research topics. By relying on common outcome measures, these tools can ultimately increase the speed with which we advance the science of these important research areas.

**Assessment Center<sup>SM</sup>:** Free website that can be used to create study-specific websites for capturing participant data securely. The majority of instruments listed below are available within the Assessment Center.

- Website: <http://www.assessmentcenter.net/>

#### NIH Toolbox:

- Features: Multidimensional. The majority of supplies and equipment required are available through multiple vendors and may overlap across different test batteries.
- Target ages: 3-85
- Language: English and Spanish
- Availability: Assessment Center or PDFs
- Domains covered: Cognition, Emotion, Motor, and Sensory function
- Cost: All measures are available royalty free, however there are costs associated with user and technical support.
- Website: <http://www.nihtoolbox.org/>

#### PROMIS<sup>®</sup> (Patient Reported Outcome Measurement Information System):

- Features: Have corresponding manuals and psychometric data available. Available as individual scales with subscales, individual items, or profiles that incorporate multiple measures to evaluate a concept area.
- Target ages: Adult, pediatric, and parent proxy forms for pediatric populations available
- Language: English and Spanish
- Availability: Assessment Center or PDFs
- Domains covered: Emotional Distress; Applied Cognition; Psychosocial Illness Impact; Alcohol; Fatigue; Pain; Physical Function; Sleep; Sexual Function and Satisfaction; Satisfaction; Companionship; Informational Support; Emotional Support; Instrumental Support; Social Isolation; Peer Relationships; Asthma Impact; Global Health
- Cost: Free
- Website: <http://www.nihpromis.org/>

NIH has developed several resources to provide researchers with evidenced-based outcome measures for a variety of psychological domains.

*continued from President's Column, page 4*

I would like to see the Division double its ECP presence in 2013. Let's work together this year to recruit sixteen more Early Career Psychologists to our Division. All I am asking you to do is locate and talk to one ECP in the next four months. This person could be your doctoral student who just completed a dissertation defense. This person could be a colleague in your Department or at a nearby institution. This person could be a dazzling first-time presenter at the CPA Conference or APA Convention. Find him or her. Tell that person what APA *and* Division 28 have meant to you and your career. Let them know that they represent the future of scientific progress in the areas of Psychopharmacology and Substance Abuse. That ECP you're talking to could well be the President of Division 28 before the end of the decade. In just a few months, a series of such one-on-one conversations could lead to the growth and progress of our Division 28 community. Let's make it happen.

I would like to see the Division double its ECP presence in 2013.

---

*continued from New Research Resources, page 5*

#### **Neuro-QOL (Quality of Life in Neurological Disorders):**

- **Features:** Instruments assess health-related quality of life for adults and children with neurological disorders. Available in both self-report and proxy versions. Scales can evaluate generic symptoms and target specific patient populations. Manuals available.
- **Target Ages:** Adult and pediatric populations
- **Language:** English available online, reports indicate Spanish scales have been developed
- **Availability:** Assessment Center or PDFs
- **Domains covered:** Anxiety, Depression, Anger, Fatigue, Upper Extremity Function, Lower Extremity Mobility, Applied Cognition, Emotional and Behavioral Dyscontrol, Positive Affect and Well-being, Sleep Disturbance, Ability to participate/Satisfaction in social roles and activities, Social relations, Stigma, Pain, Communication
- **Cost:** All measures are available royalty free, though charges may be incurred for set-up, design, analysis, or interpretation of Neuro-QOL data.
- **Website:** <http://www.neuroqol.org/>

## STATEMENTS FROM DIVISION 28 PRESIDENTIAL CANDIDATES

*Presidential candidates are presented in alphabetical order on pages 7 and 8.*

- Stacey Sigmon, Ph.D.

I am honored to be nominated for Division 28 President. I have conducted psychopharmacology research since 1992, beginning with nonhuman research at UNC-Chapel Hill and later clinical research at Johns Hopkins and the University of Vermont. I am also dedicated to mentoring junior scientists and to my clinical role as the Director of Vermont's first and largest methadone clinic. I joined Division 28 my first year of graduate school (1996) and since that time have participated regularly in our annual convention (18 presentations in 17 years). I have served as Program Chair and Member-at-Large and on our Program, Awards, and Executive Committees. I also have been honored to receive Division 28's Poster Award, the Wyeth Young Psychopharmacologist Award, and to be elected Fellow.

As President, my objectives would be two-fold. First, I would sustain the important initiatives established by my predecessors. These include increasing membership, enhancing our fiscal foundation, preserving convention programming

supporting students and ECPs, and providing advocacy with NIH and other agencies. I also propose a strategic new initiative: Scientific success in this challenging climate now depends a great deal on cross-disciplinary collaboration, yet this is often easier said than done. I suggest we identify ways to cultivate new transdisciplinary collaborations. This could include expanding our website to offer forums for cross-talk among research groups and developing symposia and other educational opportunities around this topic. In closing, I would be privileged to dedicate my time and efforts to continuing our Division's tradition of excellence in training, research and dissemination.

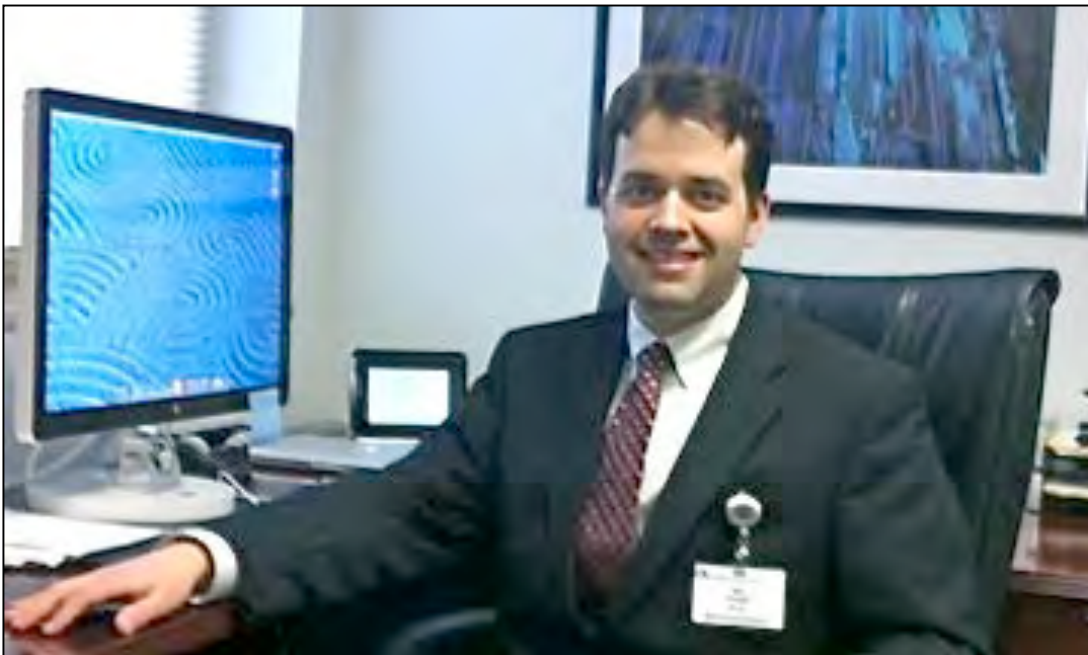


## STATEMENTS FROM DIVISION 28 PRESIDENTIAL CANDIDATES

*Presidential candidates are presented in alphabetical order on pages 7 and 8.*

- William Stoops, Ph.D.

I am excited and honored by the nomination to serve as President of Division 28. Division 28 has been my “home” division in APA since joining as a student in 2000. Subsequently, I have risen from member to fellow and served on the Executive Committee as both Newsletter Editor and Secretary. I believe that my experience with the division, and the attendant knowledge of its inner workings, make me a good presidential candidate. The division has many strengths, including an energized core membership, a sterling reputation as an advocate for psychological science within and outside of APA, and a proud history of leadership in psychopharmacology and substance abuse research. The division also faces challenges, including a continued need to recruit members at all levels, concerns over finances in an uncertain economy, as well as potential APA governance and convention restructuring. If elected, I will use my existing working relationships with the executive committee and general membership to determine the best ways to navigate these challenges while maintaining the divisional aspects that we value most. I also plan to develop new initiatives during my presidency, focusing on a) retention of students transitioning from affiliate to member status, b) using our unique mix of senior and early career psychologists to enhance intergenerational engagement, and c) promoting knowledge exchange between preclinical and clinical scientists given the broad range of scientific interests represented by division members. Thank you for your consideration.



## STATEMENTS FROM DIVISION 28 MEMBER-AT-LARGE CANDIDATES

*Member-at-Large candidates are presented in alphabetical order on pages 9 and 10.*

- F. Joseph McClernon, Ph.D.

It is a sincere honor to be considered for Division 28 Member-at-Large. I am an Associate Professor in the Department of Psychiatry and Behavioral Sciences at Duke University Medical Center. I have been a regular member of APA and Division 28 since earning my Ph.D. in clinical psychology in 2001; I became an APA Fellow in 2012. I view serving as Member-at-Large as an excellent opportunity to continue to become more actively involved. I believe my background and experience make me well-suited to serve as a Member-at-Large who can represent the diverse perspectives, skill sets and content areas of our membership: I am a clinician by training who spends the majority of my time conducting research. My research spans multiple levels including human laboratory, neuroimaging, treatment



development and epidemiology. I am Chief of a newly formed division in our Department that promotes translational research across multiple substance use disorders. Finally, whereas the majority of my research has focused on the problem on nicotine dependence, I have also conducted work on stimulants, and problems with conceptual ties to substance use including obesity and gambling. I regularly mentor junior colleagues both in and outside my lab; and make mentoring and training a high career priority.

If elected Member-at-Large, I will bring energy, ideas and commitment to the position and the Division and look forward to serving you.

## STATEMENTS FROM DIVISION 28 MEMBER-AT-LARGE CANDIDATES

*Member-at-Large candidates are presented in alphabetical order on pages 9 and 10.*



- Kathryn Saulsgiver, Ph.D.

It is an honor to be considered for the Division 28 Member-at-Large position. Since attending the 2009 APA convention I have had the opportunity to become increasingly involved with Division 28. Currently I have the privilege to serve as the 2013 Program Chair, under the leadership of President Anthony Liguori, for the annual convention in Hawaii. In this role I will oversee an extraordinary program that encompasses the basic principles and tenets of Division 28. While serving as Program Chair I have had the opportunity to learn the dynamics of the Division and APA. In addition to participating on executive committee calls and working with other committee members, I have also worked with leadership from other

divisions to coordinate joint sessions that will simultaneously promote Division 28 as well as strengthen relations between the divisions. My goal as a Member-at-Large is to further the mission of Division 28, promote membership, and to cultivate relationships between Division 28 and scientific fields with similar goals, including other APA Divisions. I believe that building these relationships and collaborations will strengthen the impact of Division 28 moving forward. My background in Substance Abuse research, Behavior Analysis, and Behavioral Economics, as well as my current position as a Research Associate at the Center for Health Incentives and Behavioral Economics at the University of Pennsylvania make me well suited for such a role. I hope to have the opportunity to carry out these objectives as a Member-at-Large of Division 28 and thank you for your consideration.

## CONVENTION UPDATE

- Kathryn Saulsgiver, Ph.D. 2013 Program Chair

---

### 2013 Convention Programming Update

---

The 2013 APA convention in Honolulu, Hawaii is only 6 months away! Thanks to the hard work and dedication of the Division 28 members and executive committee we have put together an exceptional program filled with research in behavioral economics, technology, drug use vulnerability, and mental health. We will also be co-hosting many networking and social events with other divisions.

In addition to our annual **Young Investigator's Award Symposium, Med Associates Brady-Schuster Award Lecture, New Fellows Symposium, and President's Lecture**, we will be sponsoring the following symposia from our members:

1. Behavioral Economics and Maternal-Infant Health among Substance Abusers
2. Drug Abuse Vulnerability: A Developmental Window into "Subtle" Environmental Exposures
3. Examining Group-based Trajectories in Substance Use Disorder Clinical Trial Data
4. Technology Based Interventions for Substance Use Disorders and Related Conditions

We will also be sponsoring several **Paper Sessions** focused on behavioral and pharmacological related treatments for substance abuse and dependence:

1. Buprenorphine and Opioid Addiction
2. Monitoring and Treating Stimulant Use and Abuse
3. Mental Health and Treating Substance Abuse Disorder

We have also worked closely with **Divisions 6, 25, and 50** this year to cross-advertise many symposia and paper sessions from each division that would be of interest to all of our members. We strongly recommend attending these sessions as well as others you will find in the 121<sup>st</sup> APA program:

1. Translating Neuroscience Findings into Practical Drug Abuse Prevention
2. Integrating Neuroscience into Clinical Practice in Addiction
3. Rewards: The Effect of Drugs of Abuse on Sexual Behavior
4. Symposium on Social Factors in Addiction and Learning

Our **Division 28 Poster Session**, in collaboration with **Divisions 6 and 50**, will be held on Friday morning. This poster session will exhibit research from many of our talented and productive members and provide an excellent opportunity for networking with other APA members in and outside of our division. On Friday night of the conference, we will co-host the annual **NIDA/NIAAA Young Investigators Poster Session and Social** with our colleagues in **Divisions 6 and 50** as well. We encourage all to attend.

This year's location should prove to be fun and exciting. Honolulu, Hawaii has much to offer in the way of entertainment, fine dining, outdoor activities, and an abundance of water sports. We encourage everyone to turn your trip to the Convention into a fun-filled vacation.

We hope you can attend the 121<sup>st</sup> Annual convention of APA in Honolulu, Hawaii, July 31-August 4. You may visit <http://www.apa.org/convention/index.aspx> to register for this year's Convention after April 1<sup>st</sup> and to secure your hotel reservations!

## STUDENT COLUMN

- Alexa Lopez, Division 28 Student Representative

---

### Post-doctoral Fellowships: What You Should Know While You're Still in Graduate School

---

As doctoral-level students who are busy working on comprehensive exams and determining what they should propose for their dissertation, the concept of a post-doctoral fellowship has been long engrained by their fellow students and advisors. However, there are many factors that need to be considered before jumping into a post-doc following the dissertation defense and subsequent post-reinforcement pause before starting a 2- to 3-year fellowship. Practice-focused grad students should allow for the accumulation of supervised hours needed for licensure, while research-focused grad students can learn new techniques and fine-tune their research and career focus.

While this topic has been covered in gradPSYCH over the last decade, many of the tips and tricks that have been offered through those articles (Benson, 2006; Smith Bailey, 2004) still hold true today.

#### Post-Doc Basics

- The process is much more informal than applying to grad school or getting an internship placement; but that doesn't mean it isn't important
  - While practice-focused internships ([www.appic.org](http://www.appic.org)) and clinical neuropsychologists ([www.appcn.org](http://www.appcn.org)) have a matching process, it can be a little more vague for psychologists looking for a post-doc
  - This fosters independence while still being in graduate school and allows more concentrated research and training experience
- Start early and set goals
  - It's recommended to start thinking about post-docs while applying for internships or while writing your dissertation
  - Also think about what it is you want to get out of the experience
- Do homework and network
  - Will this fellowship fit with your goals? It is important to talk to former or current post-docs and see what advice they have
  - Conferences and professional meetings provide the perfect opportunity to reach out to potential mentors and experts in the field to see if they are accepting post-docs

#### Practice-Focused Post-Docs

- Be proactive
  - Find out if your internship site also has the option of returning for a post-doc
- Choose between formal and informal
  - APA- or APPIC-accredited programs are designed to give you specialized experience
  - More informal programs involve working as a psychological assistant or unlicensed psychologist for a private practitioner where you can log hours and gain high-quality experience, but you risk missing the mark on APA post-doc guidelines that are guaranteed through accreditation

*continued on page 13*

*continued from Student Column, page 12*

#### Research-Focused Post-Docs

- Mentor fit
    - Again, here's where you need to do some homework; talk to former post-docs, look at past publications to see if fellows can obtain authorship with the mentor
    - Considering the right balance of independence and mentorship is also important
  - Funding
    - While most programs may have funding mechanisms that account for post-doctoral training, you may end up being funded off of grants that can change from year to year
  - Goals and expectations
    - Once you have found a mentor, work together to determine objectives you will complete during the fellowship
    - Continuously evaluate your progress on these goals under mentor supervision
    - Pursue a match that will help to develop a sustainable career
- 

### **STUDENTS: APPLY FOR STUDENT-SPECIFIC RESEARCH AWARDS!**

#### APA Student Travel Award

- Deadline: 3/1/2013
- 100 awards of \$300 to support for travel to APA convention.
- <http://www.apa.org/about/awards/scidir-stutrav.aspx>

#### American Psychological Foundation/Council of Graduate Departments of Psychology Graduate Research Scholarships

- Deadline: 6/1/2013
- 15 Annual Scholarships ranging from \$1,000 - \$5,000
- <http://www.apa.org/apf/funding/cogdop.aspx>

#### Dissertation Research Award

- Deadline: 9/15/2013
- 30-40 grants of \$1,000, and several additional \$5,000 grants
- <http://www.apa.org/about/awards/scidir-dissertre.aspx>

#### Early Graduate Student Researcher Awards

- Deadline: 9/16/2013
- Established by APA Science Student Council. \$1,000 awards.
- <http://www.apa.org/about/awards/scistucoun-earlyre.aspx>

## ADVOCACY UPDATE

- Vatsalya Vatsalya M.D., M.S., P.G.D., & Veronica Schmidt, B.S.

---

### NIDA and NIAAA stay independent structure-wise, Neuroscience Initiative by White House and APA Advocacy on Training and Congressional Visits with Research on Primates

---

1. **White House Office of Science & Technology Policy briefed social and behavioral science community in January 2013.** Dr. Philip Rubin, Office of Science & Technology Policy (OSTP)'s principal assistant director for science, discussed the need for continued engagement from scientific societies as the issue of budget sequestration looms again this spring. On Jan. 10, high-level scientists from the White House OSTP briefed APA Science Government Relations staff and colleagues on a broad range of issues relevant to the social and behavioral science community. Dr. Rubin convened the meeting to update representatives from scientific associations on the administration's neuroscience initiative; OSTP priority areas for the new term related to scientific innovation, infrastructure, education and workforce diversity; and the need for continued engagement from scientific societies as the issue of budget sequestration looms again this spring.

2. **NIH abandons plan to replace NIDA and NIAAA with new institute.** NIH Director Francis Collins announced in mid-November that NIH would pursue only a functional rather than a structural integration of substance use, abuse and addiction research. A plan to replace the National Institute on Drug Abuse (NIDA) and the National Institute of Alcohol Abuse and Alcoholism (NIAAA) with the National Institute on Substance Use and Addictive Disorders (NISUAD) at the National Institutes of Health (NIH) fell apart unexpectedly in mid-November. The news caught the scientific community by surprise as it had been led to believe that NIH would soon be releasing a draft strategic plan for the new institute as well as a much-anticipated portfolio analysis indicating which areas of the current NIH substance use research portfolio would be included in the new institute. The reorganization had been controversial from the start and while APA never took a position on whether or not NIH should pursue a structural reorganization, we took early and frequent opportunities to question the process. A brief description of the new Trans-NIH Substance Use, Abuse, and Addiction Functional Integration is available on the NIH Feedback website: <http://www.nih.gov/blog/feedback/substance-abuse/functional-integration.pdf>. In addition, a scientific strategic plan, which emerged from stakeholder input in response to a Request for Information, will be used as a starting point to move integration efforts forward in several areas cited as new opportunities for the basic, prevention and treatment sciences as well as the medical consequences of substance use, abuse and addiction.

3. **APA advocacy training and congressional visits highlight research with chimpanzees.** On Oct. 2, 2012, members of APA's Committee on Animal Research and Ethics (CARE) along with CARE Early Career Fellows made 14 visits to Capitol Hill offices. The scientists encouraged their members' offices to avoid the looming across-the-board cuts that will happen on Jan. 2 if Congress does not override them, and to oppose the Great Ape Protection and Cost Savings Act (GAPCSA) when it is reintroduced in the next session of Congress. On Sunday, Oct. 1, members of APA's Science Government Relations Office conducted advocacy training and prepped the committee for their meetings the following day.

NIH Director Francis Collins announced in mid-November that NIH would pursue only a functional rather than a structural integration of substance use, abuse and addiction research

*continued on page 15*

*continued from Advocacy update, page 14*

Other Headlines:

**Upcoming Senate vote on the Violence against Women Reauthorization Act of 2013.** The Violence against Women Act (VAWA) was initially enacted in 1994 as part of the Violent Crime Control and Law Enforcement Act of 1994; it is the first U.S. federal law to acknowledge domestic violence and sexual assault as crimes and to provide federal resources encouraging coordinated community responses to combat violence. Despite successful reauthorizations in 2000 and 2005, efforts in the last session of Congress to reauthorize VAWA ultimately were not successful. Throughout the multi-year legislative process, APA's Public Interest Government Relations Office advocated for the most comprehensive reauthorization, including key health provisions and protections for vulnerable populations. APA members, colleagues, and governance members played a critical role in advocating for VAWA reauthorization by contacting their congressional representatives and sharing invaluable professional expertise.

**Sharp rise in admissions for certain drug combinations over 10 years.** Substance abuse treatment admissions for addiction involving combined use of benzodiazepine and narcotic pain relievers grew by a total of 569.7 percent, to 33,701, from 2000 to 2010, according to a report by the Substance Abuse and Mental Health Services Administration (SAMHSA). Overall substance abuse treatment admissions of people ages 12 and older in the same period rose 4 percent, to 1.82 million, the agency said.

---

Stay informed of the actions of the APA Science Government Relations Office via their website: <http://www.apa.org/about/gr/science/index.aspx>.

Specific information regarding the federal budget is available via a dedicated budget blog provided by the APA Science Government Relations Office at: <http://www.apa.org/about/gr/science/news/budget.aspx>.

To learn more about the history of the APA Science Government Relations Office advocacy efforts, please review their advocacy archive at <http://www.apa.org/about/gr/science/advocacy/index.aspx>.

---

## 2013 VISIONARY GRANTS AND THE DRS ROSALEE G. AND RAYMOND A. WEISS RESEARCH AND PROGRAM INNOVATION GRANT

Grants support innovative research, education, and prevention efforts that advance psychological knowledge and application in:

- Understanding and fostering mental-health physical connections
- Reducing stigma and prejudice
- Understanding and preventing all forms of violence
- Addressing long-term psychological needs in the aftermath of disaster

Deadline: May 1, 2013

Website: <http://www.apa.org/apf/funding/vision-weiss.aspx>

## EARLY CAREER PSYCHOLOGIST

- Adriana Falco, Ph.D. & Diann Gaalema, Ph.D.

### The Rise of Women in Psychology?

Female early career psychologists (ECPs) face unique challenges during the course of their occupational development. Even though women earn the majority of psychology Ph.D.s, approximately 71% as of 2006 (Burrelli, 2008), women are continually underrepresented in academia and face a distinctive set of issues. There is no question that representation of women with psychology Ph.D.s in academia and other occupations have vastly improved, however as of 2006, women still only held 46.2% of tenured or tenure-track faculty spots, and 33.4% of full professorships (Burrelli, 2008). There is also evidence that these numbers are not likely to improve any time soon. Approximately only 25% of women decide to go into academic based careers, down from the 40% who state they wish to do so at the beginning of graduate school (Currid-Halkett, 2012). One of the biggest factors in this decision is the desire to start a family.

Women with families have significantly lower odds of gaining tenure, and married women with young children have about a 35% less chance of getting tenure than a married man with young children and 33% lower odds of becoming tenured than a single woman (Goulden, 2011). Unfortunately, academia may be unknowingly perpetuating a system where talented women leave early in their career because of feeling that career must come before family. Family leave benefits vary widely from university to university; some universities can provide 6 weeks or more of leave, while others provide leave dependent on the amount of full-time hours an individual has recorded, often leaving graduate students, postdoctoral researchers, and beginning faculty with few leave options when having children and coping with parenting responsibilities (Goulden, 2011). No doubt, these early experiences color a woman's expectations of the field and how she will continue to be treated as well as her expectations for continued success. It is particularly ironic as many women are choosing to have families in graduate school and during postdoctoral training due to heightened flexibility, and biological and social timepoints.

Can these issues be rectified? Often the assumption is held that jobs will increase for minority groups as educational opportunities are increased. But, in this instance, there seems to be a special case where employment opportunities may have grown in theory, but not in practice. It is unclear whether this is due to inherent institutional gender bias, or due to women self-selecting out of the employment pool due to perceived or actual difficulties in allowing for family obligations and choices. Until universities and employees can clearly meet on issues, it may be that seeking and offering mentoring is the best way deal with these issues. Perhaps, some critical mass of female mentors will eventually be reached to allow women ECPs to feel supported so that they will feel encouraged to remain in the field in spite of difficulties balancing work and personal life.

#### References:

- Burrelli, J. (2008). Infobrief: thirty-three years of women in S&E faculty positions. Retrieved from <http://www.nsf.gov/statistics/>
- Currid-Halkett, E. (2012). Troubling talent drain. *The L.A. Times*. Retrieved from <http://articles.latimes.com/2012/aug/21/opinion/la-oe-currid-halkett-women-in-academia-20120821>
- Goulden, M., Mason, M.A., & Frasch, K. (2011). Keeping women in the science pipeline. *The Annals of the American Academy of Political and Social Science*, 638, 141-162.

Women with families have significantly lower odds of gaining tenure, and married women with young children have about a 35% less chance of getting tenure than a married man with young children and 33% lower odds of becoming tenured than a single woman

## 2013 DIVISION 28 AWARD WINNERS

Marci Mitchell, Ph.D.  
Outstanding Dissertation Award Winner.  
Graduate of University of Florida and current postdoctoral fellow at  
Yale University.



Carmela M. Reichel, Ph.D.  
Young Psychopharmacologist Award Winner.  
Research Assistant Professor, Medical University of South  
Carolina.



**2013 DIVISION 28 AWARD WINNERS**

Richard W. Foltin, Ph.D. (Pictured here before and after award notification)  
Med Associates Brady-Schuster Award.  
Professor of Neurobiology in Psychiatry, New York State Psychiatric Institute  
Columbia University

**Psychopharmacology and Substance Abuse News Editorial Policy:**

*Psychopharmacology and Substance Abuse News* is a thrice-yearly publication of Division 28. It is devoted to keeping its members informed about the activities of Division 28 and to news and comments concerning all aspects of psychopharmacology and substance abuse. Articles, comments, announcements, and advertisements should be sent to the editor, Kelly Dunn, at [kdunn9@jhmi.edu](mailto:kdunn9@jhmi.edu).

## EXPERIMENTAL AND CLINICAL PSYCHOPHARMACOLOGY

### TABLE OF CONTENTS: 2012, VOLUME 20 (6)

The effects of exercise on cocaine self administration, food-maintained responding, and locomotor activity in female rats: The importance of the temporal relationship between physical activity and initial drug exposure.

- Smith, Mark A. & Witte, Maryam, A.
- Pages 437-446

A comparison of therapies for the treatment of drug cues: Counterconditioning vs. extinction in male rats.

- Tunstall, Brendan J.; Verendeev, Andrey; & Kearns, David D.
- Pages 447-453

Alcohol increases impulsivity and abuse liability in heavy drinking women.

- Reed, Stephanie Collins; Levin, Francis R.; & Evans, Suzette, M.
- Pages 454-465

Initial development of a measure of expectancies for combinations of alcohol and caffeine: The Caffeine + Alcohol Combined Effects Questionnaire (CACEQ)

- MacKillop, James; Howland, Jonathan; Rohsenow, Damaris J.; Few, Lauren R.; Amlung, Michael T.; Metrik, Jane; & Calise, Tamara Vehige
- Pages: 466-472

Cue reactivity as a predictor of successful abstinence initiation among adult smokers.

- Conklin, Cynthia A.; Parzynski, Craig S.; Salkeld, Ronald P.; Perkins, Kenneth A.; Fonte, Carolyn A.
- Pages 473-478

An ecological momentary assessment analysis of prequit markers for smoking cessation.

- Yeh, Vivian M.; McCarthy, Danielle E.; & Baker, Timothy B.
- Pages 479-488

Visual search and attentional bias for smoking cues: The role of familiarity.

- Oliver, Jason A.; & Drobles, David J.
- Pages 489-496

Preliminary evidence for lowered basal cortisol in a naturalistic sample of methamphetamine polydrug users.

- Carson, Dean S.; Bosanquet, David P.; Carter, C. Sue; Pournajafi-Nazarloo, Hossein; Blaszczyński, Alex; & McGregor, Iain S.
- Pages 497-503

A review of preliminary observations on agomelatine in the treatment of anxiety disorders.

- Levitan, Michelle Nigri; Papalbaum, Marcelo; & Nardi, Antonio Egidio
- Pages 504-509

## EXPERIMENTAL AND CLINICAL PSYCHOPHARMACOLOGY

### TABLE OF CONTENTS: 2013, VOLUME 21 (1)

Panoramic projection: Affording a wider view on contextual influences on alcohol-related cognitions.

- Monk, Rebecca L.; & Heim, Derek
- Pages 1-7

The effects of cue-specific inhibition training on alcohol consumption in heavy social drinkers.

- Jones, Andrew & Field, Matt
- Pages 8-16

Self-regulation, daily drinking, and partner violence in alcohol treatment-seeking men.

- Schumacher, Julie A.; Soffey, Scott F.; Leonard, Kenneth E.; O'Jile, Judith R.; & Landy, Noah C.
- Pages 17-28

Alcohol consumption and urges to smoke among women during a smoking cessation attempt.

- Businelle, Michael S.; Lam, Cho Y.; Kendzor, Darla E.; Cofta-Woerpel, Ludmilla; McClure, Jennifer B.; Cinciripini, Paul M.; & Wetter, David W.
- Pages 29-37

Age of alcohol and cannabis use onset mediates the association of transmissible risk in childhood and development of alcohol and cannabis disorders: Evidence for common liability.

- Kirisci, Levent; Tarter, Ralph; Ridenour, Ty; Zhai, Zu Wei; Fishbein, Diana; Reynold, Maureen; & Vanyukow, Michael
- Pages 38-45

Delay discounting in adults receiving treatment for marijuana dependence.

- Peters, Erica N.; Petry, Nancy M.; LaPaglia, Donna M.; Reynold, Brady; & Carroll, Kathleen M.
- Pages 46-54

A comprehensive examination of delay discounting in a clinical sample of cannabis-dependent military veterans making a self-guided quit attempt.

- Heinz, Adrienne J.; Peters, Erica N.; Boden, Matthew T.; & Bonn-Miller, Marcel O.
- Pages 55-65

Smoking and the bandit: A preliminary study of smoker and nonsmoker differences in exploratory behavior measured with a multiarmed bandit task.

- Addicott, Merideth, A.; Pearson, John M.; Wilson, Jessica; Platt, Michael L.; McClernon, F. Joseph
- Pages 66-73

Employment-based reinforcement of adherence to oral naltrexone treatment in unemployed, injection drug users.

- Dunn, Kelly E.; DeFulio, Anthony; Everly, Jeffrey J.; Donlin, Wendy D.; Aklin, Will M.; Nuzzo, Paul A.; Leoutsakos, Jeannie-Marie S.; Umbricht, Annie; Fingerhood, Michael; Bigelow, George E.; & Silverman, Kenneth
- Pages 74-83

---

## HOW CAN YOU BECOME A MEMBER OF DIVISION 28?

---

### Individual Memberships:

---

Division 28 is committed to

- Basic and Applied Research
- Undergraduate, Graduate, and Postdoctoral training
- Evidenced-based Clinical Practice
- Public Service and Advocacy

We accept APA members and non-members, and have different membership levels available for students, early career psychologists (terminal degree within the past 7 years), and regular members.

Members receive a thrice yearly newsletter, and are eligible for 1 of 3 annual awards (Outstanding Dissertation, Young Psychopharmacologist, Med Associates Brady/Schuster Award).

Membership Bonus! Division 28 offers free membership to all incoming members, and free membership to student affiliates.

Please contact our membership chair Ryan Vandrey ([rvandrey@jhmi.edu](mailto:rvandrey@jhmi.edu)) or visit our membership page at <http://www.apadivisions.org/division-28/membership/index.aspx> for more information!

---

### Corporate Affiliate Memberships:

---

Corporate contributions support efforts in research, practice, and education. A membership contribution of \$1000 is tax deductible \*

Division 28 is pleased to offer the following benefits to our corporate affiliate members:

- Access to thrice yearly newsletter
- Acknowledgement of support with corporate logo in newsletter
- Newsletter acknowledgement hyperlinked to corporate website, and available to all through newsletter posting on the Division 28 website
- Recognition of corporate support at annual APA membership meeting
- Liaison(s) eligible to subscribe to Division members-only listserv
- Liaison(s) participation in active and growing Division 28 social media presence
- Receive overview of relevant programming at APA convention

For questions regarding Division 28 and Corporate Affiliate Membership visit our website for more information at <http://www.apadivisions.org/division-28/membership/index.aspx> or contact:

Dr. Anthony Liguori (Division 28 President) at [aliguori@wakehealth.edu](mailto:aliguori@wakehealth.edu)

or

Dr. Jane Acri (Division 28 Treasurer) at [jacri@nih.gov](mailto:jacri@nih.gov)

\* This is the recommended level of support. Any corporate contributions are tax exempt, and our tax number will be supplied upon request. Other levels of support are available.

## TRAINING AND EMPLOYMENT ANNOUNCEMENTS

**Postdoctoral Research Fellowships in Substance Abuse and Psychopharmacology Human Research Training****JOHNS HOPKINS UNIVERSITY**

Postdoctoral research fellowships available in a stimulating, productive program with excellent resources. Prepare to be an independent investigator.

**HUMAN LABORATORY** -- behavioral & clinical pharmacology of abused drugs (abuse liability, self-administration, cognitive/memory function, impulsivity, neuroimaging); anti-drug abuse medication development; behavioral research related to addiction: delay discounting, behavioral economics, and sexual risk behavior. Opioids, cocaine, anxiolytics, alcohol, caffeine, nicotine, hallucinogens, psilocybin, salvinorin A, MDMA, methamphetamine.

**CLINICAL TRIALS** - testing medications, behavioral therapies (especially incentive/contingency-based), and combinations; psychiatric comorbidity research; addiction & pregnancy/women; therapeutic applications for psilocybin (cancer anxiety & smoking cessation). Opioid, cocaine, tobacco, mixed/other dependencies

**Eligibility:** U.S. citizen, permanent resident. Many backgrounds are appropriate, including experimental or clinical psychology, pharmacology, psychiatry, neuroscience, public health, and social work. Background in human or nonhuman research is appropriate

**NIH stipend levels:** \$37K - 51K+.

**Start Date:** Flexible.

**Faculty:** George Bigelow, Roland Griffiths, Maxine Stitzer, Eric Strain, Kenneth Silverman, Robert Brooner, Miriam Mintzer, Una McCann, Ryan Vandrey, Anthony DeFulio, Matthew Johnson

**To apply:** Contact George Bigelow; BPRU, Behavioral Biology Research Center; 5510 Nathan Shock Drive; Johns Hopkins Bayview Campus; Baltimore, Maryland 21224-6823. (410) 550-003, bigelow@jhmi.edu.

For more information see [www.bpru.org](http://www.bpru.org)

**Research Scientist****THE UNIVERSITY OF TEXAS HEALTH SCIENCE CENTER AT SAN ANTONIO**

The Division of Neurobehavioral Research (Department of Psychiatry, UT Health Science Center at San Antonio), is seeking a motivated individual to join our ongoing NIH studies of the behavioral and biological effects of human alcohol consumption. These studies bridge human laboratory assessment and interventions to reduce dangerous drinking patterns outside the lab. This is a "springboard" position designed to allow the candidate to grow into a faculty-level position. The division offers training in the areas of behavioral pharmacology (Dr. Donald Dougherty), psychiatry (Dr. Rene Olvera), psychophysiology (Dr. Charles Mathias), neuroimaging (Dr. Ashley Acheson), and molecular biology (Dr. Nathalie Hill-Kapturczak). This position has a significant administrative/supervisory focus with ample opportunities for publication. Responsibilities include study coordination and supervision of study personnel; participant recruitment, screening, and psychological testing; data management and statistical analyses; and manuscript/grant preparations. Applicants must have completed a Ph.D. or equivalent degree in behavioral pharmacology, experimental psychology, or other relevant area. Previous postdoctoral experience preferred and preference given to those with a history or evidence of interests in developing an alcohol-related research program.

**To apply:** Submit curriculum vitae, a letter outlining interests and career goals, and representative publication reprints (pdf files) to: Dr. Donald M. Dougherty [DoughertyD@uthscsa.edu](mailto:DoughertyD@uthscsa.edu), Department of Psychiatry, University of Texas Health Science Center at San Antonio, MC 7793, 7703 Floyd Curl Drive, San Antonio, TX 78229-3900. UTHSCSA is an Equal Opportunity/Affirmative Action Employer. [gerak@uthscsa.edu](mailto:gerak@uthscsa.edu).

## TRAINING AND EMPLOYMENT ANNOUNCEMENTS

### Postdoctoral Traineeship In Drug Abuse Treatment and Services Research

#### UNIVERSITY OF CALIFORNIA, SAN FRANCISCO (UCSF)

##### Overview

The University of California, San Francisco (UCSF) is offering this National Institute on Drug Abuse (NIDA)-funded postdoctoral program. Our program is one of the few that trains scientists in treatment and service research. Scholars work with a preceptor to design and implement studies on treatment of drug dependence, including nicotine dependence. Scholars also select a specific area of focus for independent research.

Current research interests of our faculty include

- trials of efficacy and effectiveness of psychosocial and pharmacologic treatment of drug abuse, including tobacco dependence;
- innovative methodology including internet based studies;
- treatment of complex patients in innovative settings;
- diagnostic techniques and research on treatment tailored for HIV positive drug abusers and drug abusers with psychiatric and medical disorders;
- research on provision of services to drug abusing populations; and
- instrument development in drug abuse.

A variety of university-affiliated and community substance abuse programs are available as research sites. These include inpatient and outpatient setting programs that treat a range of problems related to drugs of abuse, including dependence on cocaine, nicotine, alcohol, and opiates. The program encourages close research involvement with the preceptor, and involvement in selected classes, seminars, and grant preparation.

The training program is supported in part by a Center grant, the San Francisco Treatment Research Center, and a grant supporting the Western States Node of the NIDA Clinical Trials Network program. Intellectual resources from other significant extramural funding and R01-level grants are also routinely available to scholars.

##### Philosophy

Our program's unifying philosophy is:

1. Drug abuse treatment and services research must be methodologically excellent and clinically relevant;
2. Problems related to drug abuse are best attacked from a multidisciplinary perspective; and
3. Integration of knowledge of various intellectual domains is essential to the development of effective treatment.

Because our philosophy implies that the quality of the postdoctoral program depends on the quality of the scholars, faculty, and environment, rather than on any particular class or activity, we energetically recruit in order to bring high-quality applicants into a research environment where they will work under the guidance of research-sophisticated investigators.

##### Program Faculty

Our postdoctoral program is directed by a seven-member Executive Committee and has twenty core faculty, representing psychiatry, public health and policy, the behavioral sciences, medicine, and biostatistics. They represent a diverse, but overlapping, range of research interests.

##### Postdoctoral Training Program

Each year, scholars participate in a Core Research Seminar and the Writers' Task Force, a group that facilitates, supports, and encourages the publication of manuscripts.

As part of their research training, scholars interact daily with investigators who guide them in responsible conduct of research and in solving the special ethical dilemmas of treatment and clinical research. Most scholars also take one of the several advanced statistics courses offered by the UCSF Biostatistics Department. Scholars' research projects and those of their mentors are closely tied. As scholars move from Year 1 to Year 2, they progress from a project designed by their mentor to a more independently conceived project, which they lead.

##### Goals for Postdoctoral Scholars

At the end of our postdoctoral program, we expect scholars to have acquired the following competencies and completed the following tasks:

1. gained knowledge of drugs of abuse and their treatment;
2. advanced their knowledge of statistical and methodological techniques needed for clinical and services research;
3. understand drug abuse treatment systems and drug research projects;
4. conducted at least two research projects in a clinical setting: One designed by their preceptor; and one of their own design, for which they have primary responsibility;
5. made multiple internal presentations;
6. made at least two presentations of their work at national meetings;
7. published one to three journal articles;
8. submitted a small grant application to local funding sources; published additional manuscripts from the work completed as a scholar during the two years following enrollment in our program.

##### Support for Postdoctoral Scholars

Scholars are funded by two sources. Stipend levels are set by NIH, based on years of related experience, and range from \$38,496 to \$53,112. Preceptors are often able to augment these stipends from non-NIH sources. Scholars are provided with other research support, including travel to at least one annual professional meeting and other support required for a useful training experience, including statistical consulting, some administrative support, and access to computers for writing and data analyses.

##### Background of Former Postdoctoral Scholars

Our postdoctoral scholars have come from a variety of fields, including clinical psychology, counseling psychology, developmental psychology, neuroscience, nursing, political science, psychiatry, pharmacology, and social psychology. Their studies have included vocational issues among methadone outpatients, social identities and treatment outcomes among alcohol and cocaine abusers in private treatment, the effects of acute nicotine use on cue-induced cocaine craving, mood management intervention for injection drug users, childhood trauma and PTSD in inpatient substance abusers, prevention and treatment of HIV in drug users, studies of effective educational method in drug abuse education, studies of the relationship of readiness to change and depression to nicotine dependence, studies of service utilization and outcome among elderly substance users, and studies of drug abuse treatment and services within health maintenance organizations.

##### Success of Our Postdoctoral Graduates

We admit two to four scholars every year. Graduates of our postdoctoral program have been placed at numerous high-caliber institutions where research is valued.

**To apply:** For consideration in the postdoctoral program, please send an application packet consisting of your curriculum vitae, statement of research interests, and representative work. Two (continued on next page)

## TRAINING AND EMPLOYMENT ANNOUNCEMENTS

**Postdoctoral Traineeship In Drug Abuse Treatment and Services Research (*continued from last page*)****UNIVERSITY OF CALIFORNIA, SAN FRANCISCO (UCSF)**

letters of reference should be sent directly from the recommenders to the address below. Research statement should include the following items: 1) history of research projects, 2) current interests, 3) what you would like to learn and accomplish during your postdoctoral traineeship at UCSF, and 4) a list of program faculty with whom you would like to work. Representative work can include dissertation chapters if no publications are available. Electronic submission of materials (except reference letters) is strongly encouraged.

**All applicants must have completed the doctorate at the time of entry into the program and be a U.S. citizen or have Lawful Permanent Residency (Green Card) at the time of appointment.**

Please direct information requests, application packets and letters of recommendation to:

James L. Sorensen, Ph.D.  
c/o. Barbara Paschke  
Postdoctoral Program in Drug Abuse Treatment and Services Research  
2727 Mariposa Street, Suite 100  
San Francisco, CA 94110  
tel: (415) 437-3032  
fax: (415) 437-3020  
e-mail: [Barbara.paschke@ucsf.edu](mailto:Barbara.paschke@ucsf.edu)  
<http://addiction.ucsf.edu/education/postdoctoral-training>

---

**Post-doctoral Research Fellowship Positions for Physicians****MENTAL ILLNESS RESEARCH, EDUCATION, AND CLINICAL CENTER (MIRECC) AT PHILADELPHIA VAMC**

A two-year research fellowship position is available to interested candidates, focusing on dual diagnosis of medical, psychiatric, and addictive disorders in an established center with a specific focus on co-morbidities. The start date is planned for July 1, 2013, but is negotiable. The fellowship director is Henry R. Kranzler, M.D. and other established investigator mentors include David Oslin, M.D., Steven Sayers, Ph.D., Kyle Kampman, M.D., Michael Thase, M.D., Richard Ross, M.D., and Stanley Caroff, M.D. Collaborative projects with other investigators at the University of Pennsylvania, including Charles O'Brien, M.D., Ph.D., Wade Berrettini, M.D., Ph.D., and Anna Rose Childress, Ph.D., are possible. Pilot funding is available to fellows to initiate projects in the etiology, diagnosis, clinical course, and treatment of dual disorders with access to primary care, psychiatric, and substance dependence populations, as well as chronic pain patients. Potential research approaches include clinical trials, genetic and pharmacogenetic studies, health services research, and human laboratory studies.

The fellowship provides 75% time for research and 25% clinical training in dual disorders. The goals of the fellowship are to provide a mentored experience in research design and implementation, data analysis, report and grant writing, and a supervised clinical training. Potential exists for suitable candidates to receive a third year of fellowship support.

**To apply:** Applicants must have a medical degree from an accredited medical school and be eligible to practice medicine in any state in the U.S. and be a U.S. citizen. Preference will be given to board-eligible and board-certified candidates in any medical specialty. Interested candidates should send a letter describing their research interests and career goals, and a sample of publications or grant applications to [henry.kranzler@va.gov](mailto:henry.kranzler@va.gov) or to the following mailing address: Henry R. Kranzler, M.D., MIRECC/116, Philadelphia Veterans Affairs Medical Center, 3900 Woodland Ave., Philadelphia, PA 19104

---

Psychopharmacology and Substance Abuse News Editor

Contact Information:

Kelly Dunn, Ph.D.

Johns Hopkins University School of Medicine

5510 Nathan Shock Drive

Baltimore MD 21224

P: 410-550-2254

F: 410-550-0030

---

THANK YOU TO OUR CORPORATE AFFILIATE MEMBERS:



Jazz Pharmaceuticals®

---

Division 28 Executive Committee

**Elected Officers**

- President: Anthony Liguori
- Past President: Rick Bevins
- President-Elect: Ellen Walker
- Council Representative: John Grabowski
- Members-at-Large: Ellen Walker  
Matthew Johnson  
Cynthia Crawford

**Appointed Officers**

- Secretary/Website: William Stoops
- Treasurer: Jane Acri
- Newsletter Editor: Kelly Dunn
- Divisional Awards: Sharon Walsh
- Membership: Ryan Vandrey
- Fellows: Stephen Heishman
- 2013 Program Chair: Kathryn Saulsgiver
- 2014 Program Chair: Richard Allen

**Informational Officers**

- Electronic Information: Ronald Wood

**Committee Chairs**

- Continuing Education: M. Marlyne Kilbey

**Appointed Liaisons/Monitors**

- Student Representative: Alexa Lopez
- Board of Educational Affairs: M. Marlyne Kilbey
- Liaison to Division 50: Linda Sobell
- Liaison to Division 55: M. Marlyne Kilbey
- Liaison to Science Directorate: Rick Bevins
- Women's Network Representative: Carmela Reichel
- Early Career Psychologist Representatives: Diann Gaalema, Adriana Falco
- Liaison to International Affairs: Ming Li